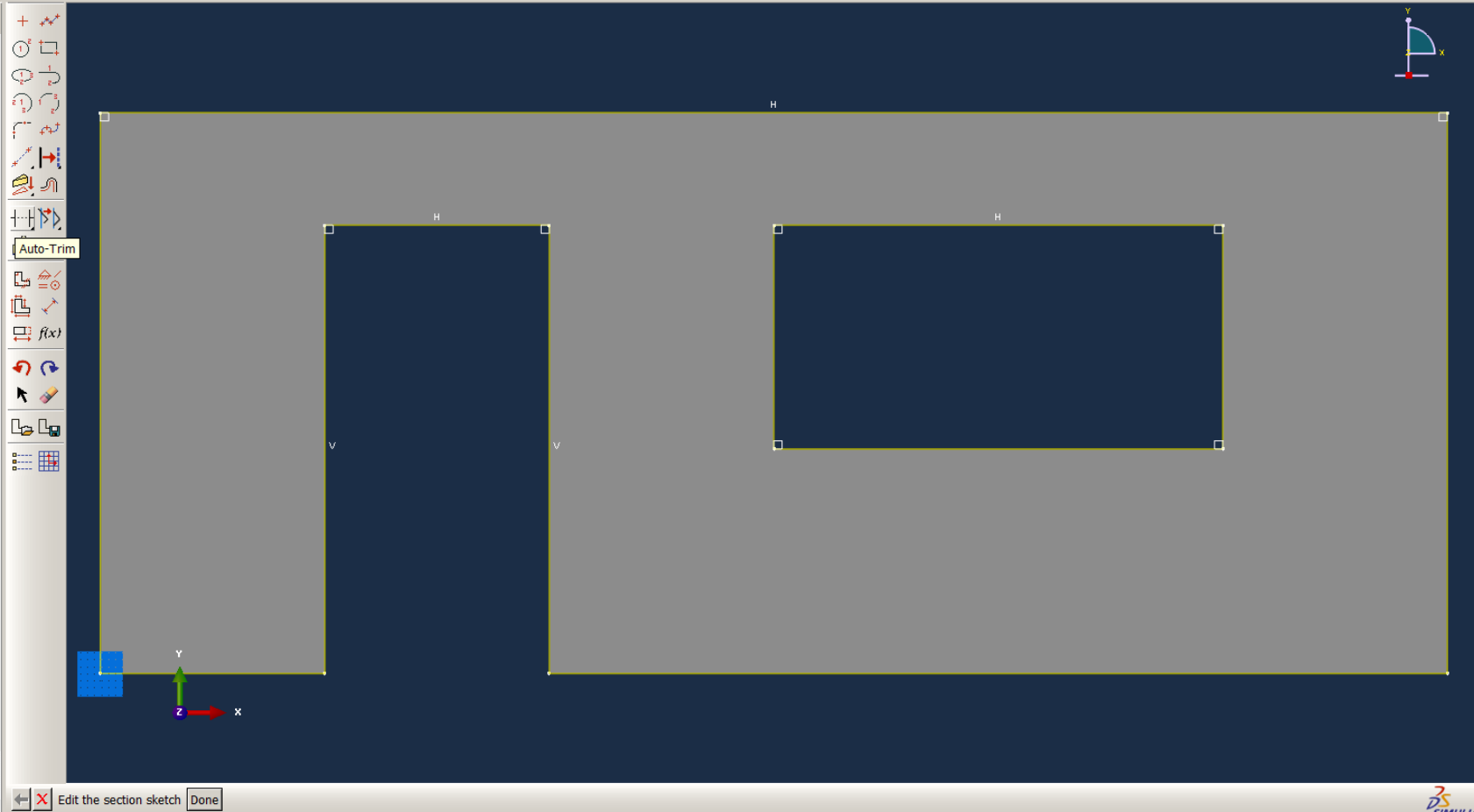




Module: Part Model: Model-1 Part: Part-1

Model Database

- Models (1)
 - Model-1
 - Parts (1)
 - Part-1
 - Features (1)
 - Shell planar-1
 - Section Sketch
 - Sets
 - Surfaces
 - Skins
 - Stringers
 - Section Assignments (1)
 - Orientations
 - Composite Layups
 - Engineering Features
 - Mesh
 - Materials (1)
 - Sections (1)
 - Profiles
 - Assembly
 - Steps (2)
 - Field Output Requests (1)
 - History Output Requests (1)
 - Time Points
 - ALE Adaptive Mesh Constraints
 - Interactions
 - Interaction Properties
 - Contact Controls
 - Contact Initializations
 - Constraints (2)
 - Connector Sections
 - Fields
 - Amplitudes
 - Loads (1)
 - BCs (2)
 - Predefined Fields
 - Remeshing Rules
 - Sketches
 - Annotations
 - Analysis



Edit the section sketch Done

Job Perete_stud: Analysis Input File Processor completed successfully.
Error in job Perete_stud: Too many attempts made for this increment
Job Perete_stud: Abaqus/Standard aborted due to errors.
Error in job Perete_stud: Abaqus/Standard Analysis exited with an error - Please see the message file for possible error messages if the file exists.
Job Perete_stud aborted due to errors.



Model Database

Models (1)

Material Manager

Name
Zidarie

Create... Edit... Copy... Rename... Delete... Evaluate... Dismiss

History Output Requests (1)

- Time Points
- ALE Adaptive Mesh Constraints
- Interactions
- Interaction Properties
- Contact Controls
- Contact Initializations
- Constraints (2)
- Connector Sections
- Fields
- Amplitudes
- Loads (1)
- BCs (2)
- Predefined Fields
- Remeshing Rules
- Sketches

Annotations

Analysis

Module: Property Model: Model-1 Part: Part-1

Edit Material

Name: Zidarie

Description: Edit...

Material Behaviors

- Concrete Smearred Cracking
 - Failure Ratios
 - Tension Stiffening
 - Elastic

General Mechanical Thermal Other Delete

Concrete

- Elasticity
- Plasticity
 - Plastic
 - Cap Plasticity
 - Cast Iron Plasticity
 - Clay Plasticity
 - Concrete Damaged Plasticity
 - Concrete Smearred Cracking
 - Crushable Foam
 - Drucker Prager
 - Mohr Coulomb Plasticity
 - Porous Metal Plasticity
- Creep
- Swelling
- Viscosity

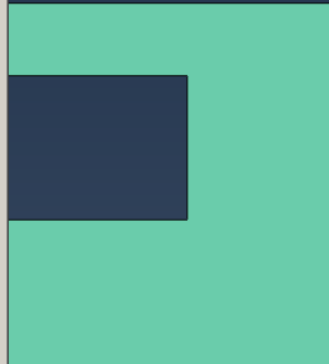
Use term

Number of

Data

1	2

OK Cancel



Job Perete_stud: Analysis Input File Processor completed successfully.
Error in job Perete_stud: Too many attempts made for this increment
Job Perete_stud: Abaqus/Standard aborted due to errors.
Error in job Perete_stud: Abaqus/Standard Analysis exited with an error - Please see the message file for possible error messages if the file exists.
Job Perete_stud aborted due to errors.

Model Database

Models (1)

- Model 1
 - Material Manager
 - Name: Zidarie

Buttons: Create..., Edit..., Copy..., Rename..., Delete..., Evaluate..., Dismiss

History Output Requests (1)

- Time Points
- ALE Adaptive Mesh Constraints
- Interactions
- Interaction Properties
- Contact Controls
- Contact Initializations
- Constraints (2)
- Connector Sections
- Fields
- Amplitudes
- Loads (1)
- BCs (2)
- Predefined Fields
- Remeshing Rules
- Sketches

Annotations

Analysis

Module: Property Model: Model-1 Part: Part-1

Edit Material

Name: Zidarie

Description: [Edit...]

Material Behaviors

- Concrete Smearred Cracking
 - Failure Ratios
 - Tension Stiffening**
 - Elastic

General Mechanical Thermal Other [Delete]

Concrete Smearred Cracking

Use temperature-dependent data

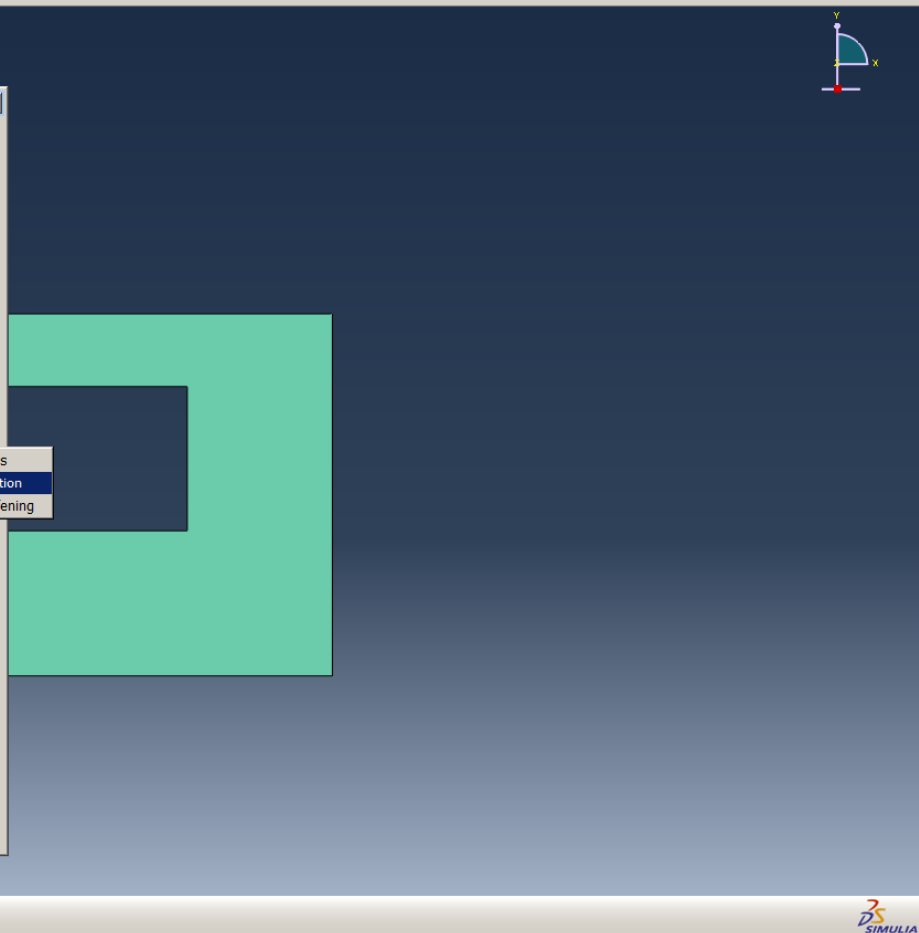
Number of field variables: 0

Suboptions: Failure Ratios, **Shear Retention**, Tension Stiffening

Data

	Comp Stress	Plastic Strain
1	12	0
2	16	0.0025

OK Cancel



Job Perete_stud: Analysis Input File Processor completed successfully.
Error in job Perete_stud: Too many attempts made for this increment
Job Perete_stud: Abaqus/Standard aborted due to errors.
Error in job Perete_stud: Abaqus/Standard Analysis exited with an error - Please see the message file for possible error messages if the file exists.
Job Perete_stud aborted due to errors.

Model Database

Models (1)

Material Manager

Name
Zidarie

Buttons: Create..., Edit..., Copy..., Rename..., Delete..., Evaluate..., Dismiss

History Output Requests (1)

- Time Points
- ALE Adaptive Mesh Constraints
- Interactions
- Interaction Properties
- Contact Controls
- Contact Initializations
- Constraints (2)
- Connector Sections
- Fields
- Amplitudes
- Loads (1)
- BCs (2)
- Predefined Fields
- Remeshing Rules
- Sketches

Annotations

Analysis

Module: Property Model: Model-1 Part: Part-1

Edit Material

Name: Zidarie

Description: [] Edit...

Material Behaviors

- Concrete Smeared Cracking
- Failure Ratios**
- Tension Stiffening
- Elastic

General Mechanical Thermal Other Delete

Concrete Smeared Cracking

Use temperature-dependent data

Number of field variables: 0

Data

	Comp Stress	Plastic Strain
1	12	0
2	16	0.0025

OK Cancel

Suboption Editor

Failure Ratios

Use temperature-dependent data

Number of field variables: 0

Data

	Ratio 1	Ratio 2	Ratio 3	Ratio 4
1	1.16	0.11	0	0

OK Cancel

Job Perete_stud: Analysis Input File Processor completed successfully.
Error in job Perete_stud: Too many attempts made for this increment
Job Perete_stud: Abaqus/Standard aborted due to errors.
Error in job Perete_stud: Abaqus/Standard Analysis exited with an error - Please see the message file for possible error messages if the file exists.
Job Perete_stud aborted due to errors.

Model Database

Models (1)

Model-1

Material Manager

Name
Zidarie

Create... Edit... Copy... Rename... Delete... Evaluate... Dismiss

History Output Requests (1)

Time Points

ALE Adaptive Mesh Constraints

Interactions

Interaction Properties

Contact Controls

Contact Initializations

Constraints (2)

Connector Sections

Fields

Amplitudes

Loads (1)

BCs (2)

Predefined Fields

Remeshing Rules

Sketches

Annotations

Analysis

Edit Material

Name: Zidarie

Description:

Material Behaviors

- Concrete Smearred Cracking
- Failure Ratios
- Tension Stiffening
- Elastic

General Mechanical Thermal Other Delete

Concrete Smearred Cracking

Use temperature-dependent data

Number of field variables: 0

Suboptions

	Comp Stress	Plastic Strain
1	12	0
2	16	0.0025

OK Cancel

Suboption Editor

Tension Stiffening

Type: Displacement

Use Displacement dependent data

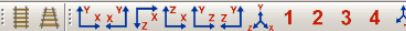
Strain

Number of field variables: 0

	Disp
1	1.5

OK Cancel

Job Perete_stud: Analysis Input File Processor completed successfully.
Error in job Perete_stud: Too many attempts made for this increment
Job Perete_stud: Abaqus/Standard aborted due to errors.
Error in job Perete_stud: Abaqus/Standard Analysis exited with an error - Please see the message file for possible error messages if the file exists.
Job Perete_stud aborted due to errors.



Model Database

- Models (1)
 - Model-1
 - Parts (1)
 - Part-1
 - Features (1)
 - Shell planar-1
 - Section Sketch

- Sets
- Surfaces
- Skins
- Stringers
- Section Assignments (1)
- Orientations
- Composite Layups
- Engineering Features
- Mesh

Materials (1)

Sections (1)

Profiles

Assembly

Steps (2)

Field Output Requests (1)

History Output Requests (1)

Time Points

ALE Adaptive Mesh Constraints

Interactions

Interaction Properties

Contact Controls

Contact Initializations

Constraints (2)

Connector Sections

Fields

Amplitudes

Loads (1)

BCs (2)

Predefined Fields

Remeshing Rules

Sketches

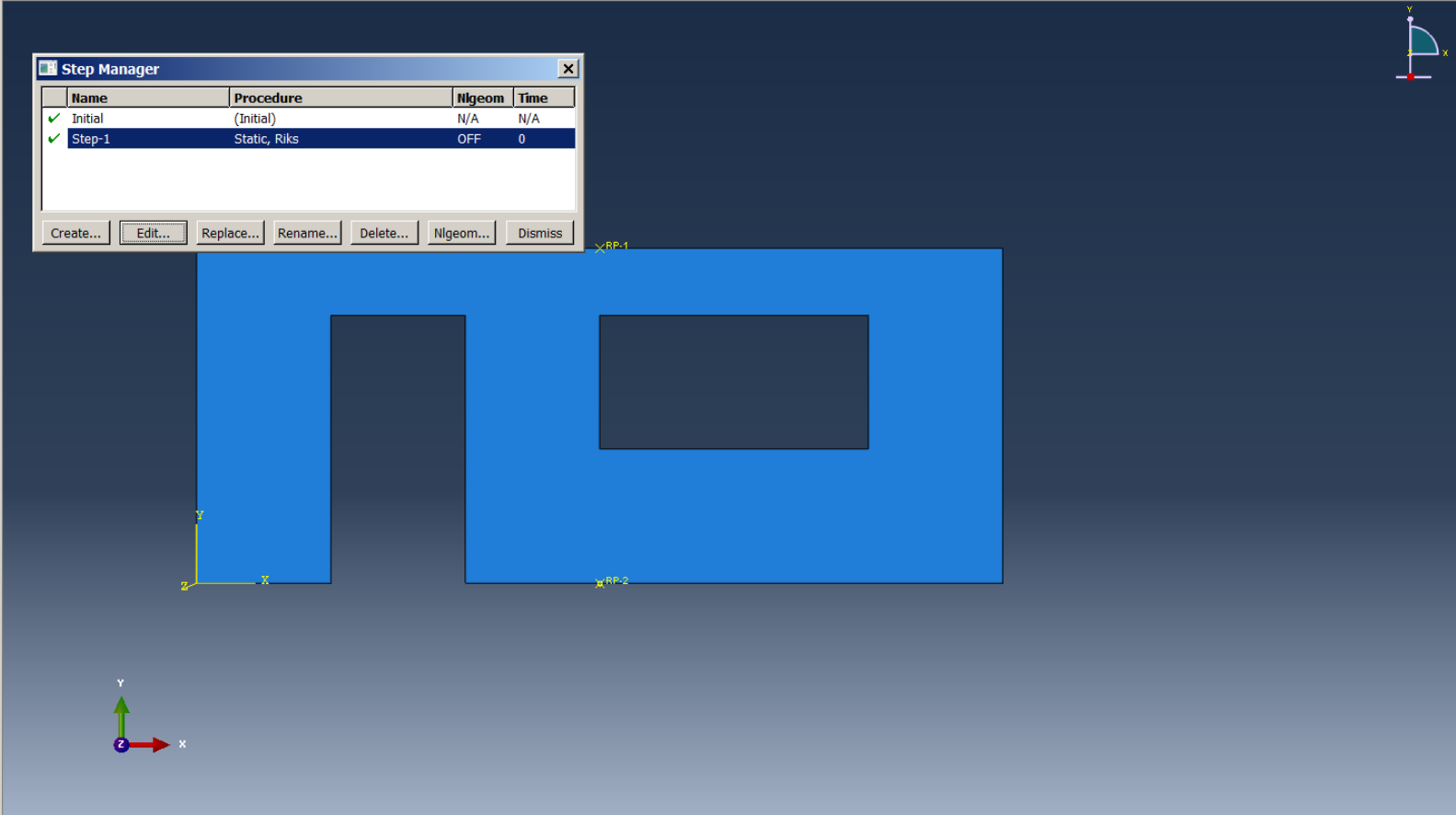
Annotations

Analysis

Module: Step Model: Model-1 Step: Initial

Name	Procedure	Nlgeom	Time
Initial	(Initial)	N/A	N/A
Step-1	Static, Riks	OFF	0

Create... Edit... Replace... Rename... Delete... Nlgeom... Dismiss



Job Perete_stud: Analysis Input File Processor completed successfully.
Error in job Perete_stud: Too many attempts made for this increment
Job Perete_stud: Abaqus/Standard aborted due to errors.
Error in job Perete_stud: Abaqus/Standard Analysis exited with an error - Please see the message file for possible error messages if the file exists.
Job Perete_stud aborted due to errors.

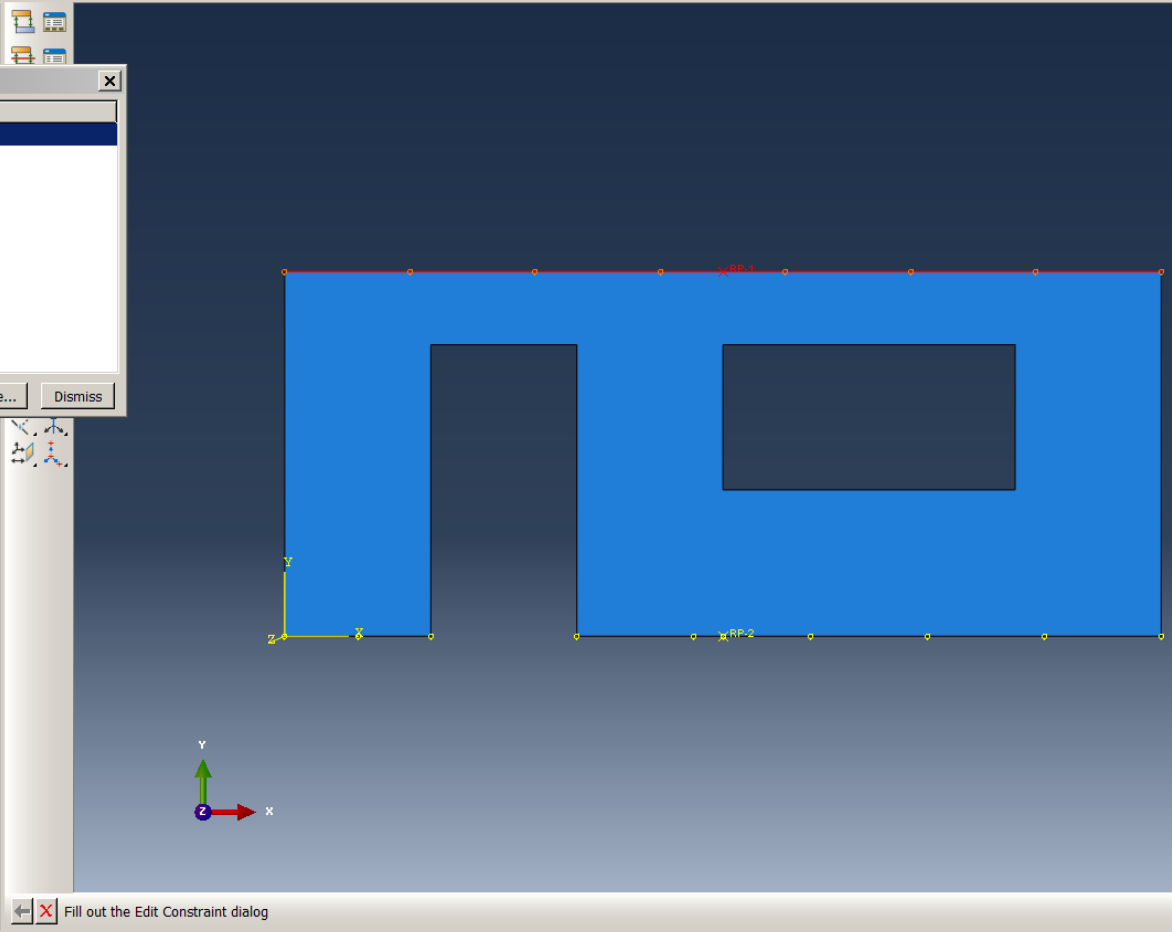


Constraint Manager

Name	Type
✓ Constraint-1	Rigid body
✓ Constraint-2	Rigid body

Create... Edit... Copy... Rename... Delete... Dismiss

- Sections (1)
- Profiles
- Assembly
- Steps (2)
- Field Output Requests (1)
- History Output Requests (1)
- Time Points
- ALE Adaptive Mesh Constraints
- Interactions
- Interaction Properties
- Contact Controls
- Contact Initializations
- Constraints (2)
- Connector Sections
- Fields
- Amplitudes
- Loads (1)
- BCs (2)
- Predefined Fields
- Remeshing Rules
- Sketches
- Annotations
- Analysis



Edit Constraint

Name: Constraint-1
Type: Rigid Body

Region type	Region	Edit...
Body (elements)	(None)	Clear
Pin (nodes)	(None)	
Tie (nodes)	(Picked)	
Analytical Surface	(None)	

Reference Point
Point: (Picked) Edit...

Adjust point to center of mass at start of analysis.

Constrain selected regions to be isothermal (coupled thermal-stress analysis only)

OK Cancel

Model Database

- Models (1)
 - Model-1

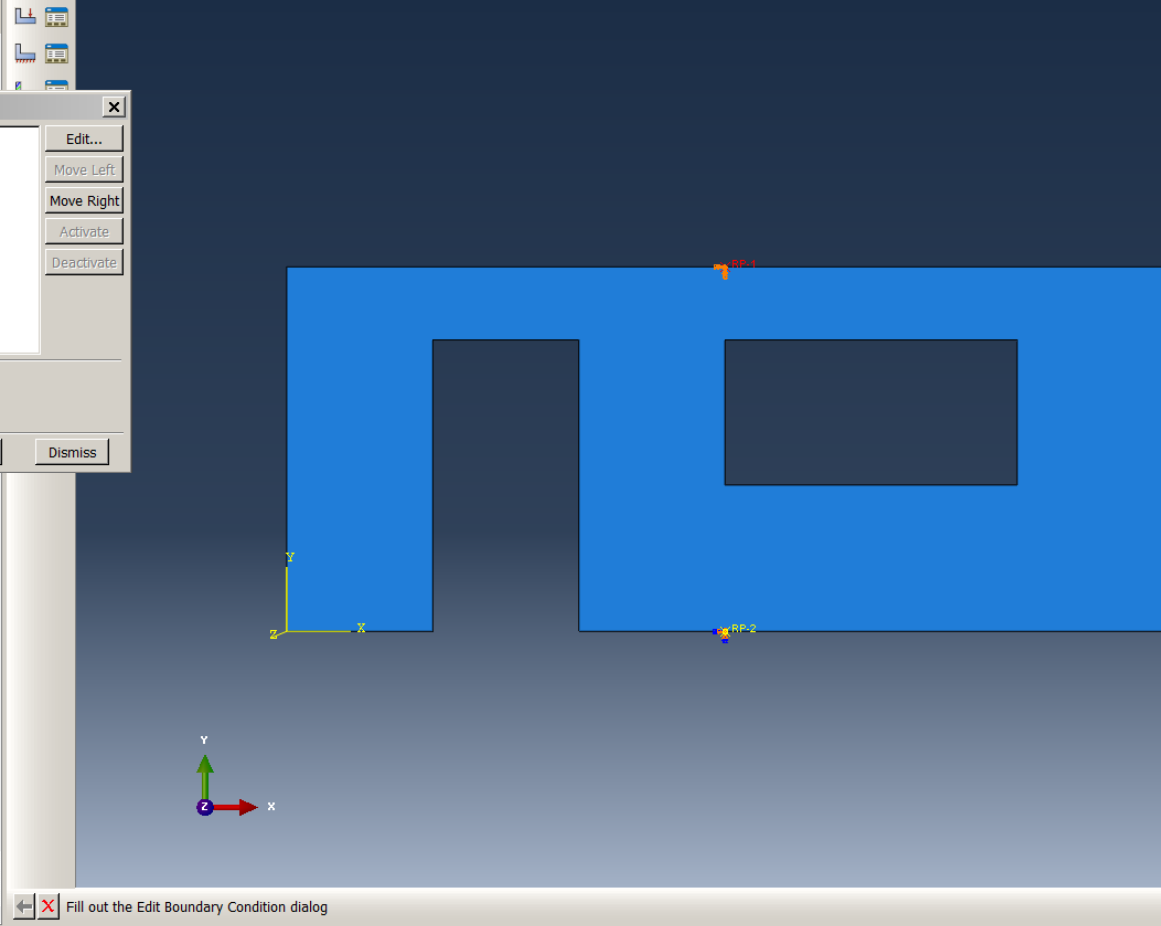
Boundary Condition Manager

Name	Initial	Step-1
BC-1	Created	Propagated
BC-2	Created	Propagated

Step procedure:
Boundary condition type: Displacement/Rotation
Boundary condition status: Created in this step

Create... Copy... Rename... Delete... Dismiss

- Steps (2)
- Field Output Requests (1)
- History Output Requests (1)
- Time Points
- ALE Adaptive Mesh Constraints
- Interactions
- Interaction Properties
- Contact Controls
- Contact Initializations
- Constraints (2)
- Connector Sections
- Fields
- Amplitudes
- Loads (1)
- BCs (2)
- Predefined Fields
- Remeshing Rules
- Sketches
- Annotations
- Analysis



Edit Boundary Condition

Name: BC-2

Type: Displacement/Rotation

Step: Initial

Region: (Picked) Edit Region...

CSYS: (Global) Edit... Create...

- U1
- U2
- U3
- UR1
- UR2
- UR3

Note: The displacement value will be maintained in subsequent steps.

OK Cancel

Job Perete_stud: Analysis Input File Processor completed successfully.
 Error in job Perete_stud: Too many attempts made for this increment
 Job Perete_stud: Abaqus/Standard aborted due to errors.
 Error in job Perete_stud: Abaqus/Standard Analysis exited with an error - Please see the message file for possible error messages if the file exists.
 Job Perete_stud aborted due to errors.

Model Database

Models (1)

Load Manager

Name	Step-1
✓ Load-1	Created

Step procedure: Static, Riks
Load type: Concentrated force
Load status: Created in this step

Create... Copy... Rename... Delete... Dismiss

Edit Load

Name: Load-1
Type: Concentrated force
Step: Step-1 (Static, Riks)
Region: (Picked) [Edit Region...](#)

CSYS: (Global) [Edit...](#) [Create...](#)

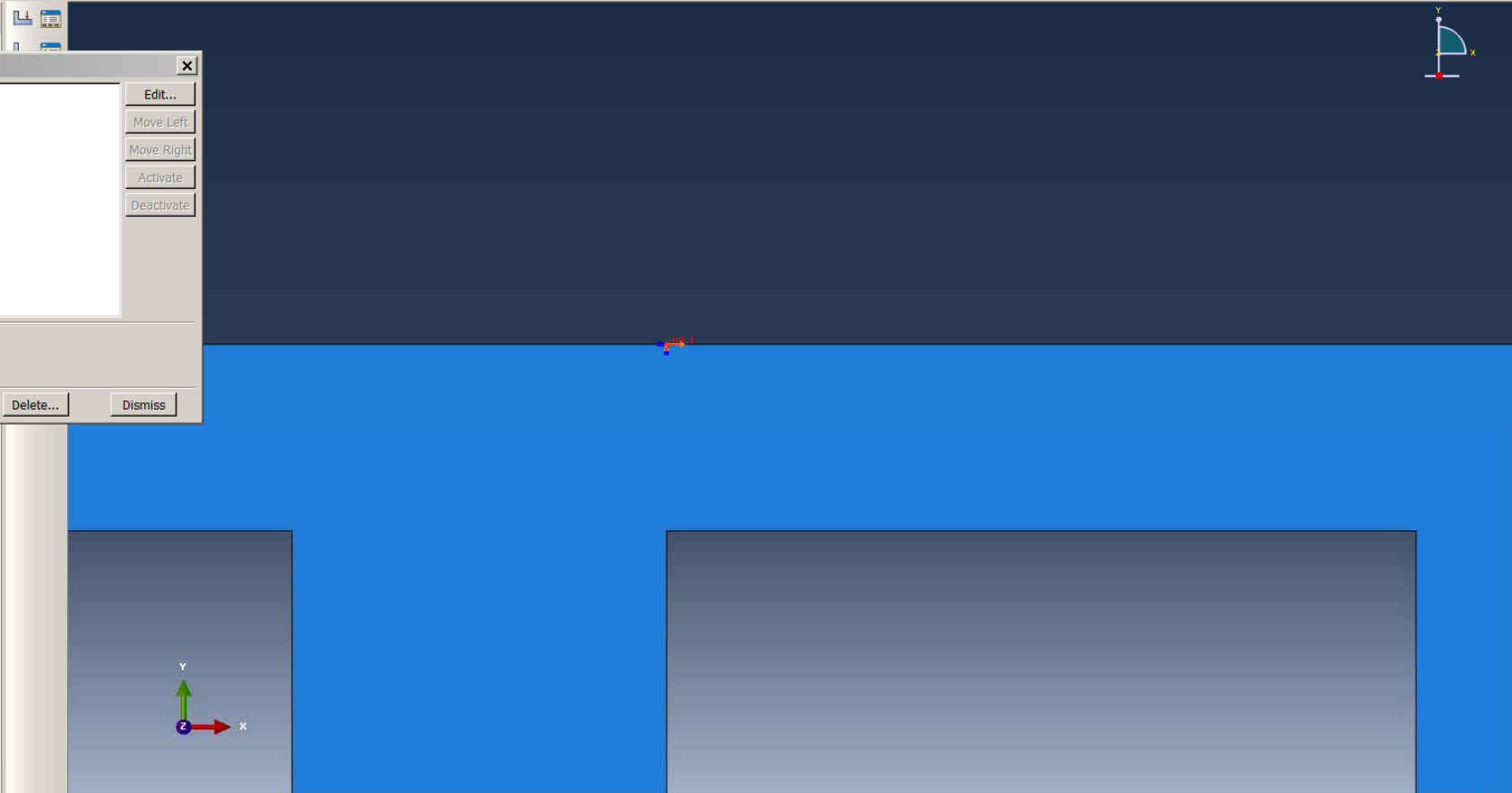
Distribution: Uniform [Create...](#)

CF1: 100000
CF2: 0
CF3: 0

Follow nodal rotation

Note: Force will be applied per node.

OK Cancel



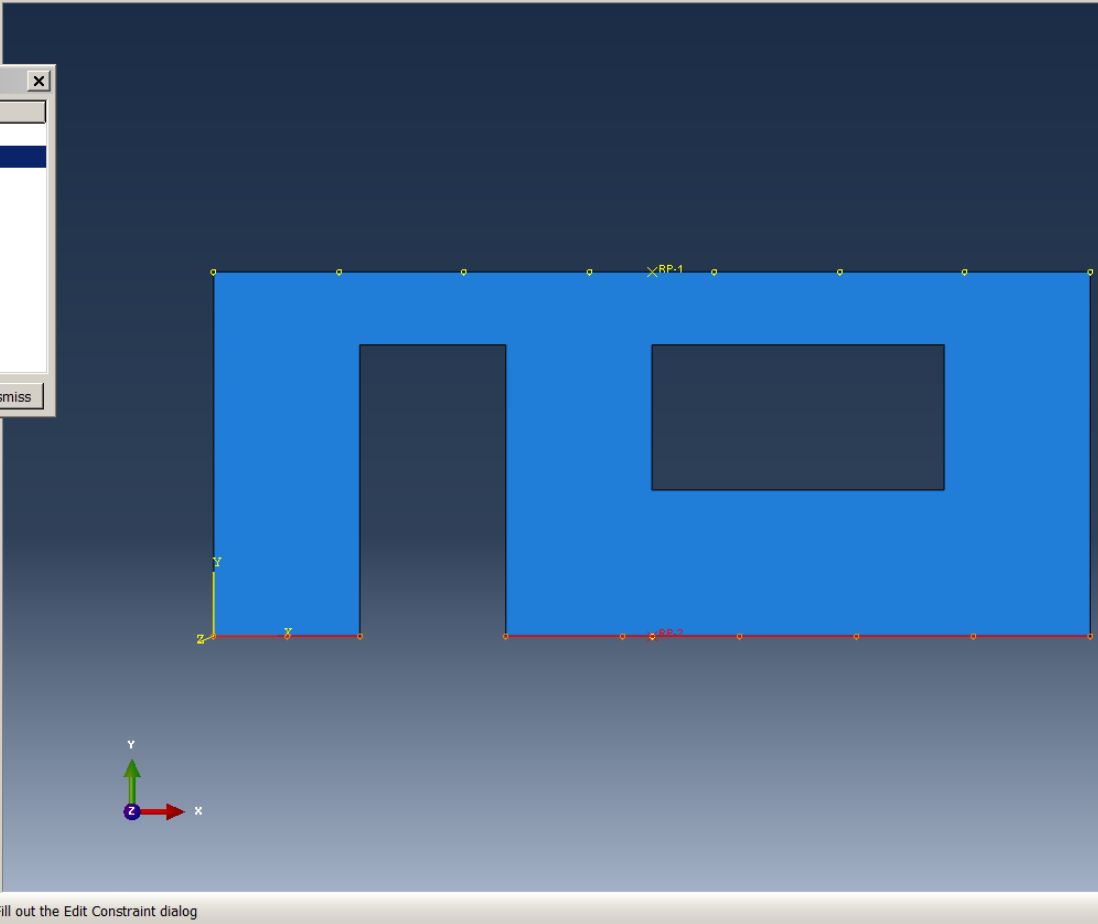
Annotations

Analysis

Job Perete_stud: Analysis Input File Processor completed successfully.
Error in job Perete_stud: Too many attempts made for this increment
Job Perete_stud: Abaqus/Standard aborted due to errors.
Error in job Perete_stud: Abaqus/Standard Analysis exited with an error - Please see the message file for possible error messages if the file exists.
Job Perete_stud aborted due to errors.

Name	Type
Constraint-1	Rigid body
Constraint-2	Rigid body

- Sections (1)
- Profiles
- Assembly
- Steps (2)
- Field Output Requests (1)
- History Output Requests (1)
- Time Points
- ALE Adaptive Mesh Constraints
- Interactions
- Interaction Properties
- Contact Controls
- Contact Initializations
- Constraints (2)
- Connector Sections
- Fields
- Amplitudes
- Loads (1)
- BCs (2)
- Predefined Fields
- Remeshing Rules
- Sketches
- Annotations
- Analysis



Edit Constraint

Name: Constraint-2
Type: Rigid Body

Region type	Region	Edit...
Body (elements)	(None)	Clear
Pin (nodes)	(None)	
Tie (nodes)	(Picked)	
Analytical Surface	(None)	

Reference Point

Point: (Picked) Edit...

Adjust point to center of mass at start of analysis.

Constrain selected regions to be isothermal (coupled thermal-stress analysis only)

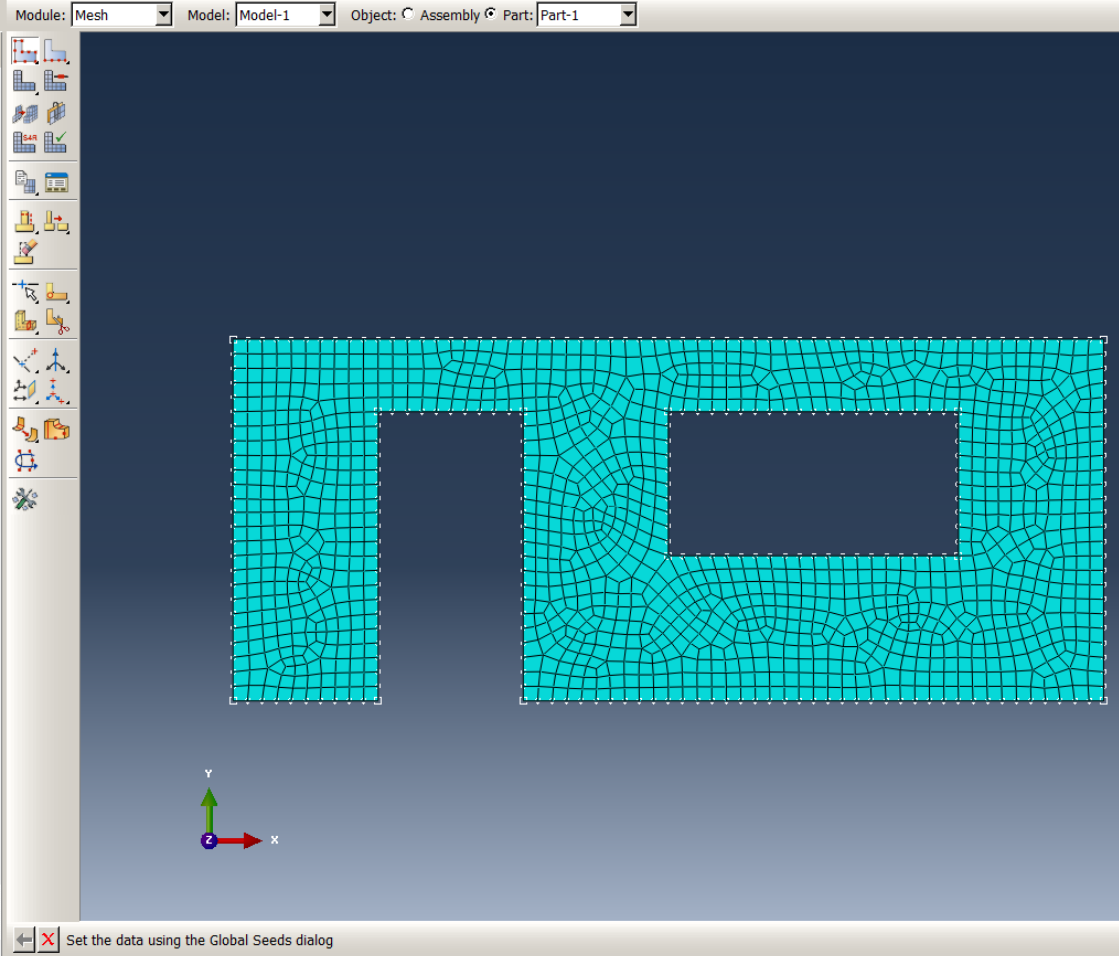
OK Cancel

Job Perete_stud: Analysis Input File Processor completed successfully.
Error in job Perete_stud: Too many attempts made for this increment
Job Perete_stud: Abaqus/Standard aborted due to errors.
Error in job Perete_stud: Abaqus/Standard Analysis exited with an error - Please see the message file for possible error messages if the file exists.
Job Perete_stud aborted due to errors.



Model Database

- Models (1)
 - Model-1
 - Parts (1)
 - Part-1
 - Features (1)
 - Shell planar-1
 - Section Sketch
 - Sets
 - Surfaces
 - Skins
 - Stringers
 - Section Assignments (1)
 - Orientations
 - Composite Layups
 - Engineering Features
 - Mesh
 - Materials (1)
 - Sections (1)
 - Profiles
 - Assembly
 - Steps (2)
 - Field Output Requests (1)
 - History Output Requests (1)
 - Time Points
 - ALE Adaptive Mesh Constraints
 - Interactions
 - Interaction Properties
 - Contact Controls
 - Contact Initializations
 - Constraints (2)
 - Connector Sections
 - Fields
 - Amplitudes
 - Loads (1)
 - BCs (2)
 - Predefined Fields
 - Remeshing Rules
 - Sketches
 - Annotations
 - Analysis



Global Seeds

Sizing Controls

Approximate global size:

Curvature control

Maximum deviation factor (0.0 < h/L < 1.0):
(Approximate number of elements per circle: 8)

Minimum size factor (as a fraction of global size):

Use default (0.1) Specify (0.0 < min < 1.0)

OK Apply Defaults Cancel

Job Perete_stud: Analysis Input File Processor completed successfully.
Error in job Perete_stud: Too many attempts made for this increment
Job Perete_stud: Abaqus/Standard aborted due to errors.
Error in job Perete_stud: Abaqus/Standard Analysis exited with an error - Please see the message file for possible error messages if the file exists.
Job Perete_stud aborted due to errors.

Session Data

Output Databases (1)

Spectrums (7)

Common Plot Options

Basic Color & Style Labels Normals Other

Render Style

Wireframe Hidden

Filled Shaded

Deformation Scale Factor

Auto-compute (249.313)

Uniform Nonuniform

Visible Edges

All edges

Exterior edges

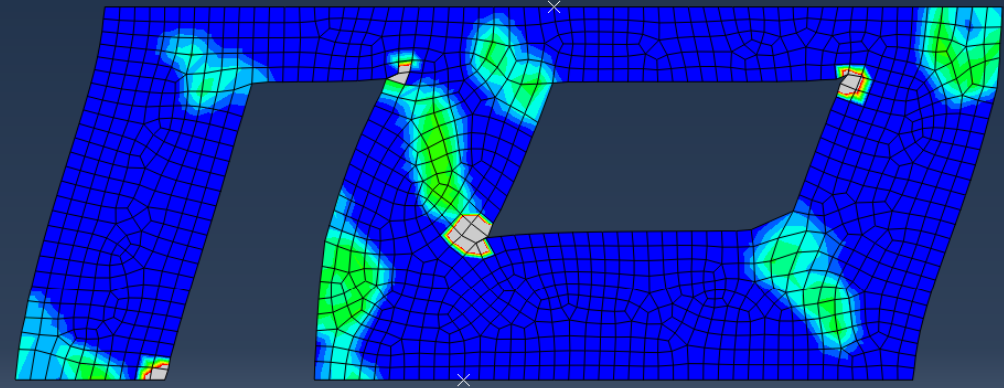
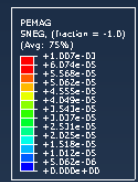
Feature edges

Free edges

No edges

Tip...

OK Apply Defaults Cancel



Y

X

Z

Step: Step-1

Increment: 23, Inc Length = 26.76

Display Var: PEMAG

Deformed Var: U, Deformation Scale Factor: +2.493e+02

Job Perete_stud: Analysis Input File Processor completed successfully.

Error in job Perete_stud: Too many attempts made for this increment

Job Perete_stud: Abaqus/Standard aborted due to errors.

Error in job Perete_stud: Abaqus/Standard Analysis exited with an error - Please see the message file for possible error messages if the file exists.

Job Perete_stud aborted due to errors.

Session Data

Output Databases (1)

Spectrums (7)

Common Plot Options

Basic Color & Style Labels Normals Other

Render Style

Wireframe Hidden

Filled Shaded

Deformation Scale Factor

Auto-compute (249.313)

Uniform Nonuniform

Visible Edges

All edges

Exterior edges

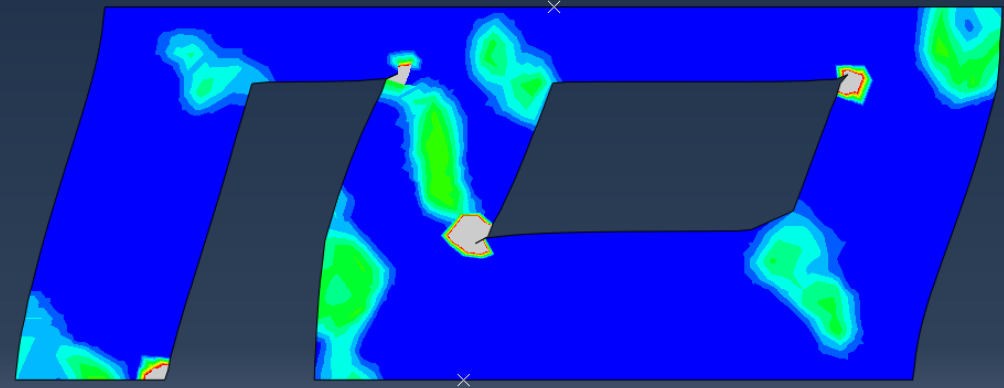
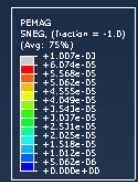
Feature edges

Free edges

No edges

Tip...

OK Apply Defaults Cancel



Y

X

Z

QDB: Perete_stud.odb Abaqus/Standard 6.10-1 Thu Nov 10 17:19:02 GMT Standard Time 2011

Step: Step-1

Increment: 23, Arc Length = 26.76

Primary Var: PEMAG

Deformed Var: U, Deformation Scale Factor: +2.493e+02

Job Perete_stud: Analysis Input File Processor completed successfully.

Error in job Perete_stud: Too many attempts made for this increment

Job Perete_stud: Abaqus/Standard aborted due to errors.

Error in job Perete_stud: Abaqus/Standard Analysis exited with an error - Please see the message file for possible error messages if the file exists.

Job Perete_stud aborted due to errors.

Session Data

- Output Databases (1)
- Spectrums (7)
- XYPlots
- XYData
- Paths
- Display Groups (1)
- Free Body Cuts
- Movies
- Images

PEMAG, (fraction = -1.0)
(Avg: 75%)

+	1.037e-03
+	6.074e-05
+	5.98e-05
+	6.062e-05
+	5.955e-05
+	5.999e-05
+	2.543e-05
+	1.037e-05
+	2.531e-05
+	2.052e-05
+	1.518e-05
+	1.011e-05
+	6.062e-06
+	0.000e+00

Contour Plot Options

Basic Color & Style Limits Other

Note: User-defined interval values override the settings below.

Min/Max

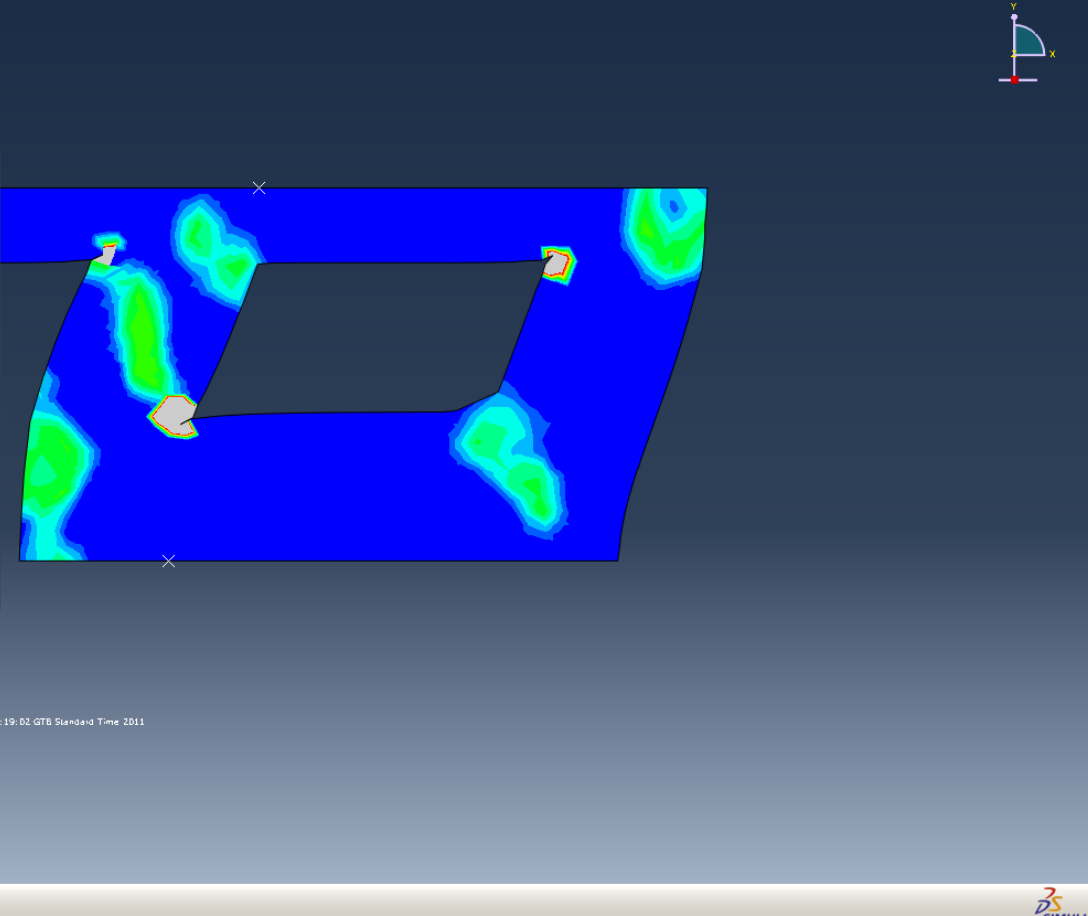
Max: Auto-compute (0.00100689) Show location
 Specify: 6.07387E-005

Min: Auto-compute (0) Show location
 Specify: 0

Auto-Computed Limits

When auto-computing animation limits:
Use limits from all frames

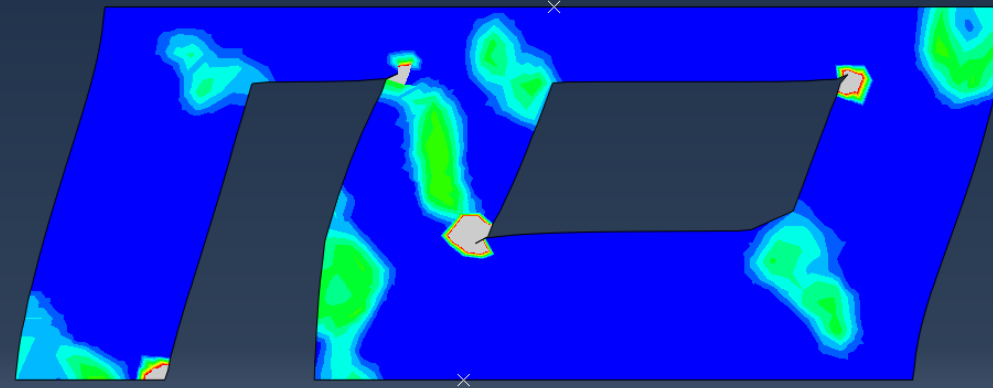
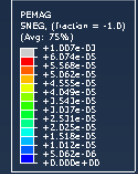
OK Apply Defaults Cancel



Job Perete_stud: Analysis Input File Processor completed successfully.
Error in job Perete_stud: Too many attempts made for this increment
Job Perete_stud: Abaqus/Standard aborted due to errors.
Error in job Perete_stud: Abaqus/Standard Analysis exited with an error - Please see the message file for possible error messages if the file exists.
Job Perete_stud aborted due to errors.

Session Data

- Output Databases (1)
- Spectrums (7)
- XYPlots
- XYData
- Paths
- Display Groups (1)
- Free Body Cuts
- Movies
- Images



ODB: Perete_stud.odb Abaqus/Standard 6.10-1 Thu Nov 10 17:19:02 GMT Standard Time 2011

Step: Step-1
Increment: 23, Inc Length = 26.76
Primary Var: PEMAG
Deformed Var: U, Deformation Scale Factor: +2.493e+02

Job Perete_stud: Analysis Input File Processor completed successfully.
Error in job Perete_stud: Too many attempts made for this increment
Job Perete_stud: Abaqus/Standard aborted due to errors.
Error in job Perete_stud: Abaqus/Standard Analysis exited with an error - Please see the message file for possible error messages if the file exists.
Job Perete_stud aborted due to errors.

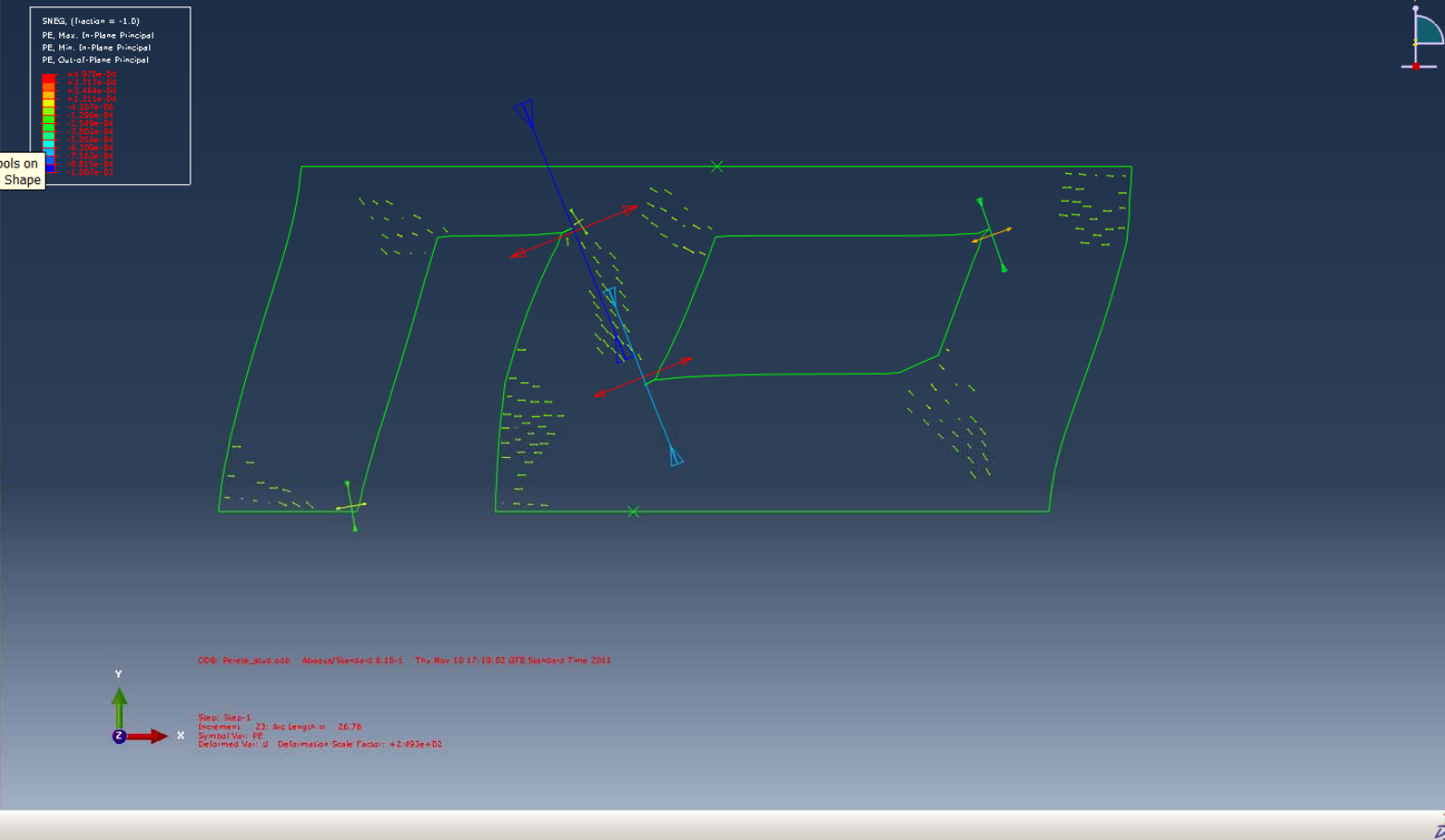
Session Data

- Output Databases (1)
- Spectrums (7)
- XYPlots
- XYData
- Paths
- Display Groups (1)
- Free Body Cuts
- Movies
- Images

Plot Symbols on Deformed Shape

SRES, (fraction = -1.0)

- PE, Max. In-Plane Principal
- PE, Min. In-Plane Principal
- PE, Out-of-Plane Principal



ODB: Perete_stud.odb Abaqus/Standard 6.10-1 Thu Nov 10 17:19:02 QTS Standard Time 2011

Step: Step-1
Increment: 23; Arc Length = 26.76
Symbol Var: PE
Deformed Var: U Deformation Scale Factor: +2.491e+02

Job Perete_stud: Analysis Input File Processor completed successfully.
Error in job Perete_stud: Too many attempts made for this increment.
Job Perete_stud: Abaqus/Standard aborted due to errors.
Error in job Perete_stud: Abaqus/Standard Analysis exited with an error - Please see the message file for possible error messages if the file exists.
Job Perete_stud aborted due to errors.