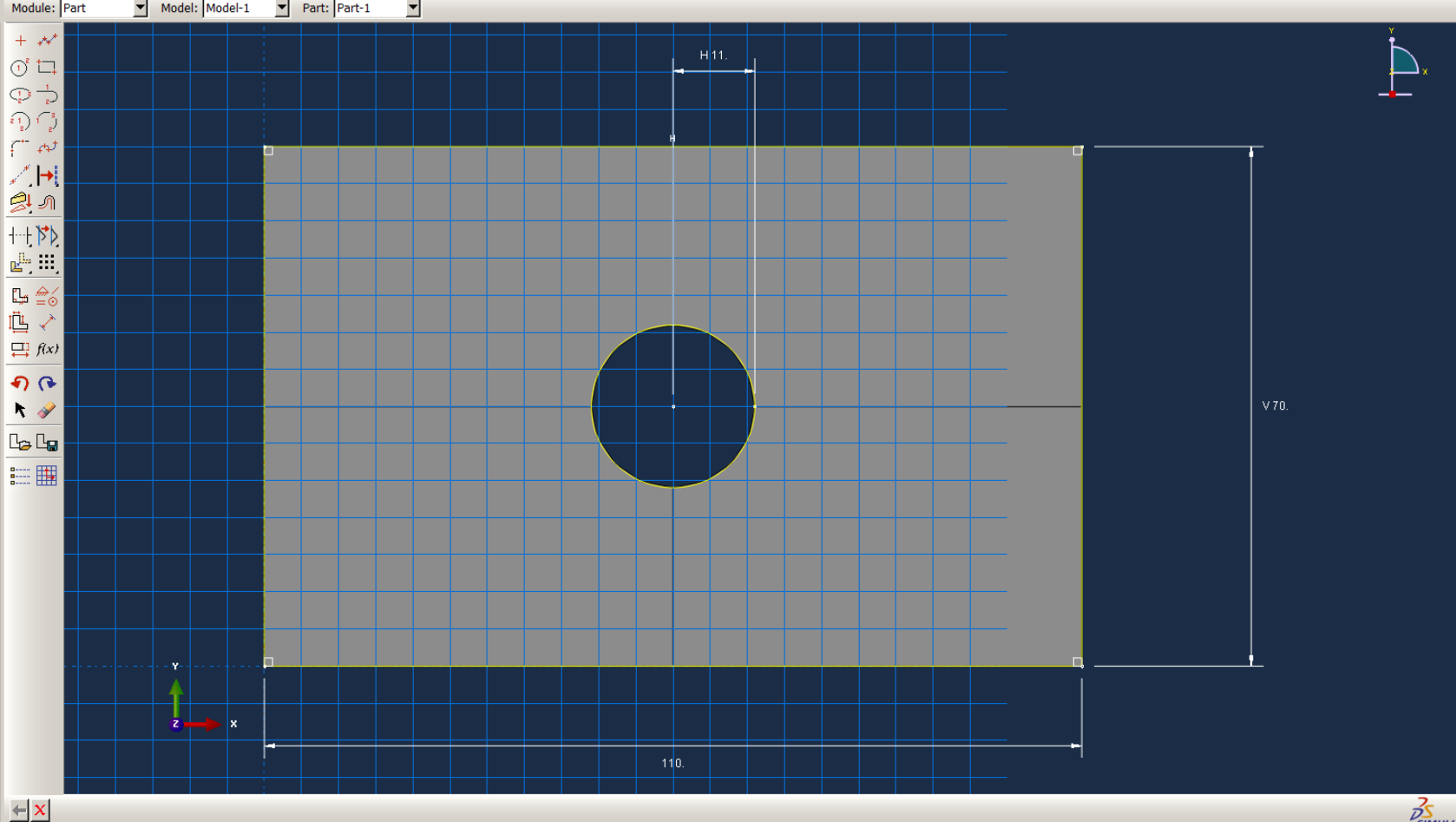


Platbanda cu gol circular

Model Database

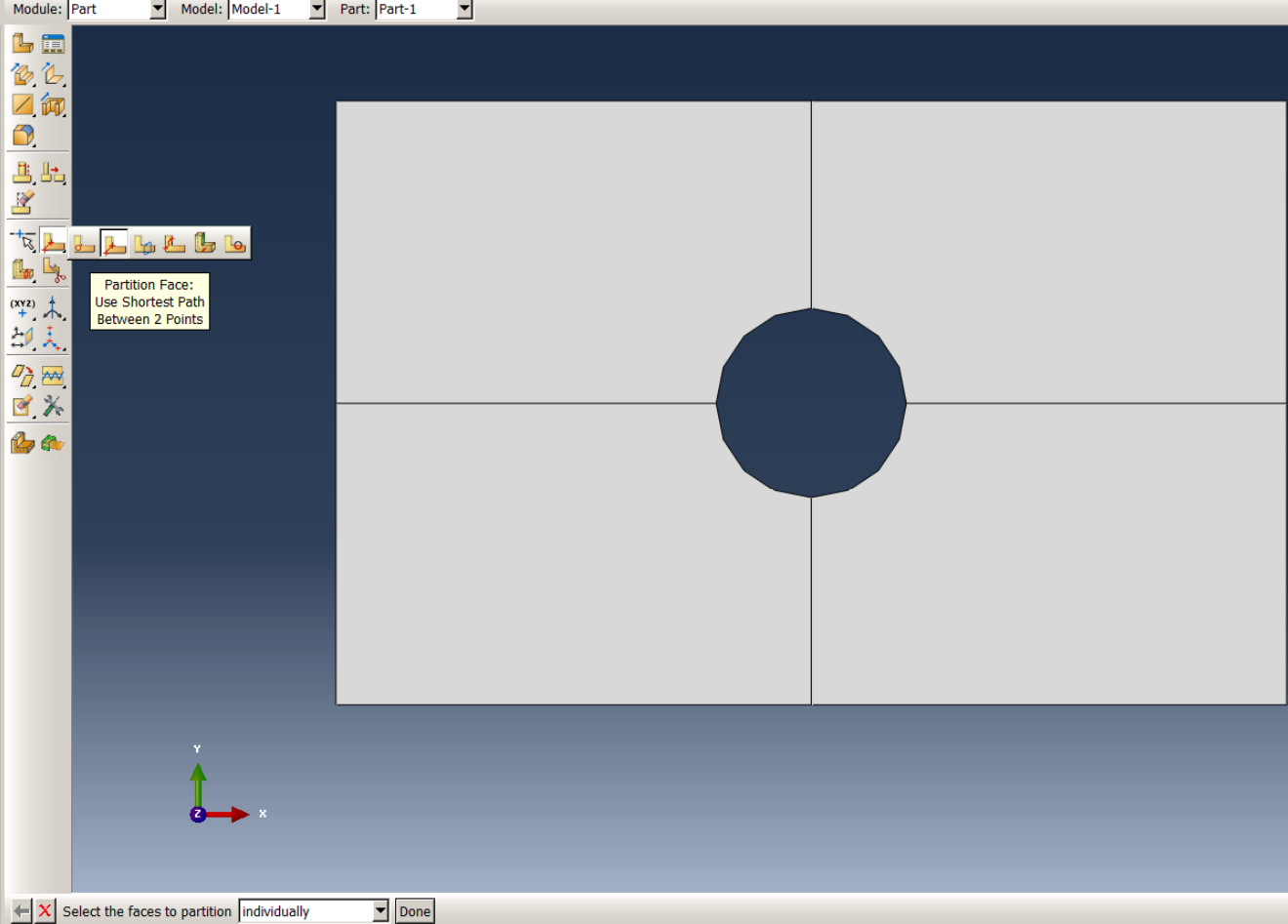
- Models (1)
 - Model-1
 - Parts (1)
 - Materials (1)
 - Sections (1)
 - Profiles
 - Assembly
 - Steps (2)
 - Field Output Requests (1)
 - History Output Requests (1)
 - Time Points
 - ALE Adaptive Mesh Constraints
 - Interactions
 - Interaction Properties
 - Contact Controls
 - Contact Initializations
 - Constraints (2)
 - Connector Sections
 - Fields
 - Amplitudes
 - Loads (1)
 - BCs (1)
 - Predefined Fields
 - Remeshing Rules
 - Sketches
 - Annotations
 - Analysis
 - Jobs (1)
 - Adaptivity Processes
 - Co-executions



XY data has been created from Path "Path-1".
XY data has been created from Path "Path-1".
XY data has been created from Path "Path-1".
XY data has been created from Path "Path-1".
XY data has been created from Path "Path-1".

Model Database

- Models (1)
 - Model-1
 - Parts (1)
 - Materials (1)
 - Sections (1)
 - Profiles
 - Assembly
 - Steps (2)
 - Field Output Requests (1)
 - History Output Requests (1)
 - Time Points
 - ALE Adaptive Mesh Constraints
 - Interactions
 - Interaction Properties
 - Contact Controls
 - Contact Initializations
 - Constraints (2)
 - Connector Sections
 - Fields
 - Amplitudes
 - Loads (1)
 - BCs (1)
 - Predefined Fields
 - Remeshing Rules
 - Sketches
 - Annotations
 - Analysis
 - Jobs (1)
 - Adaptivity Processes
 - Co-executions



Select the faces to partition Done

XY data has been created from Path "Path-1".
XY data has been created from Path "Path-1".
XY data has been created from Path "Path-1".
XY data has been created from Path "Path-1".
XY data has been created from Path "Path-1".

Model Database

Models (1)

Model-1

Material Manager

Name
S235

Create... Edit... Copy... Rename... Delete... Evaluate... Dismiss

Predefined Fields Remeshing Rules Sketches Annotations Analysis Jobs (1) Adaptivity Processes Co-executions

Edit Material

Name: S235

Description: Edit...

Material Behaviors

Elastic

Plastic

General Mechanical Thermal Other Delete

Plastic

Hardening: Isotropic Suboptions

Use strain-rate-dependent data

Use temperature-dependent data

Number of field variables: 0

Data

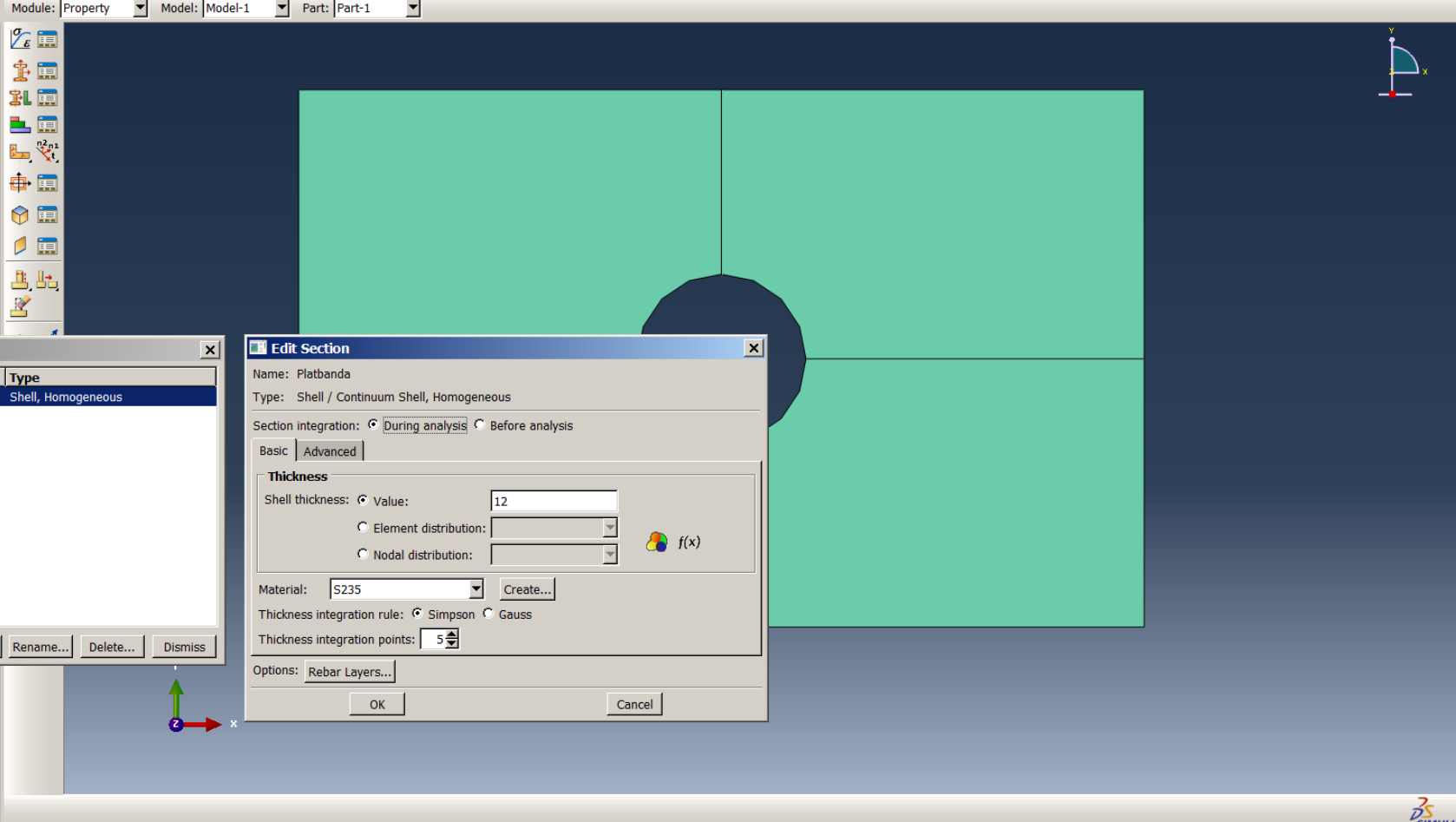
	Yield Stress	Plastic Strain
1	235	0

OK Cancel

XY data has been created from Path "Path-1".
XY data has been created from Path "Path-1".
XY data has been created from Path "Path-1".
XY data has been created from Path "Path-1".
XY data has been created from Path "Path-1".

Model Database

- Models (1)
 - Model-1
 - Parts (1)
 - Materials (1)
 - Sections (1)
 - Profiles
 - Assembly
 - Steps (2)
 - Field Output Requests (1)
 - History Output Requests (1)
 - Time Points
 - ALE Adaptive Mesh Constraints
 - Interactions
 - Interaction Properties
 - Contact Controls
 - Contact Initializ
 - Constraints (2)
 - Connector Sect
 - Fields
 - Amplitudes
 - Loads (1)
 - BCs (1)
 - Predefined Field
 - Remeshing Rule
 - Sketches
 - Annotations
 - Analysis
 - Jobs (1)
 - Adaptivity Process
 - Co-executions



Section Manager

Name	Type
Platbanda	Shell, Homogeneous

Create... Edit... Copy... Rename... Delete... Dismiss

Edit Section

Name: Platbanda
Type: Shell / Continuum Shell, Homogeneous

Section integration: During analysis Before analysis

Basic | Advanced

Thickness

Shell thickness: Value:
 Element distribution:
 Nodal distribution:

Material:

Thickness integration rule: Simpson Gauss

Thickness integration points:

Options:

XY data has been created from Path "Path-1".
XY data has been created from Path "Path-1".
XY data has been created from Path "Path-1".
XY data has been created from Path "Path-1".
XY data has been created from Path "Path-1".

Section Name (Type)	Material Name	Region
✓ Platbanda (Shell, Homogeneous)	S235	(Picked)

Interaction Properties

- Contact Controls
- Contact Initializations
- Constraints (2)
- Connector Sections
- Fields
 - Amplitudes
 - Loads (1)
 - BCs (1)
 - Predefined Fields
 - Remeshing Rules
 - Sketches
- Annotations
- Analysis
 - Jobs (1)
 - Adaptivity Processes
 - Co-executions

Edit Section Assignment

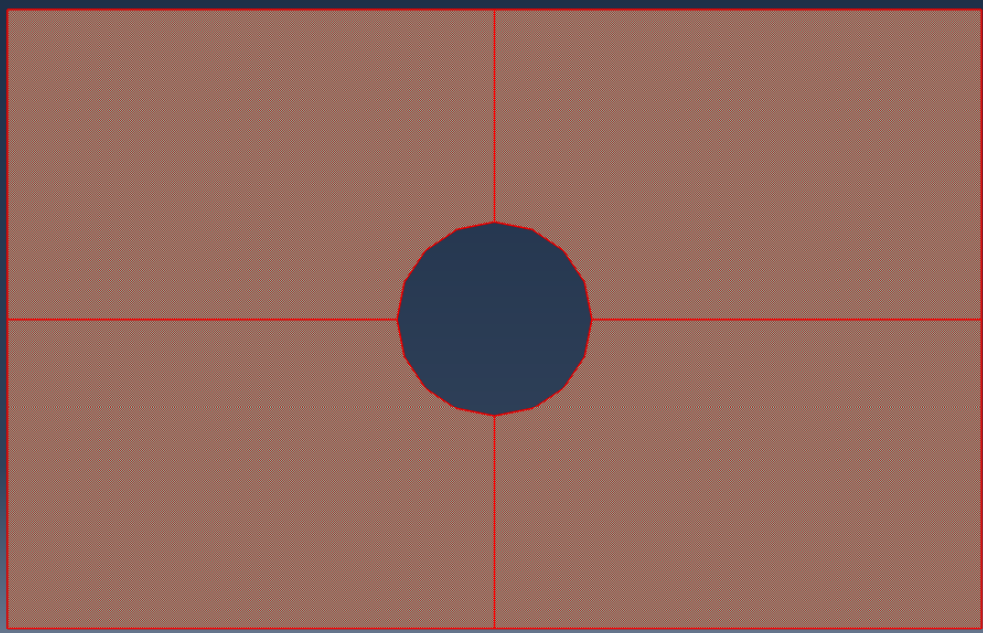
Region
Region: (Picked) Edit Region...

Section
Section: Platbanda Create...
Note: List contains only sections applicable to the selected regions.
Type: Shell, Homogeneous
Material: S235

Thickness
Assignment: From section From geometry

Shell Offset
Definition: Middle surface Create...

OK Cancel



Fill out the Edit Section Assignment dialog

XY data has been created from Path "Path-1".
XY data has been created from Path "Path-1".
XY data has been created from Path "Path-1".
XY data has been created from Path "Path-1".
XY data has been created from Path "Path-1".

Create Instance

Parts

- Part-1

Instance Type

Dependent (mesh on part)

Independent (mesh on instance)

Note: To change a Dependent instance's mesh, you must edit its part's mesh.

Auto-offset from other instances

OK Apply Cancel

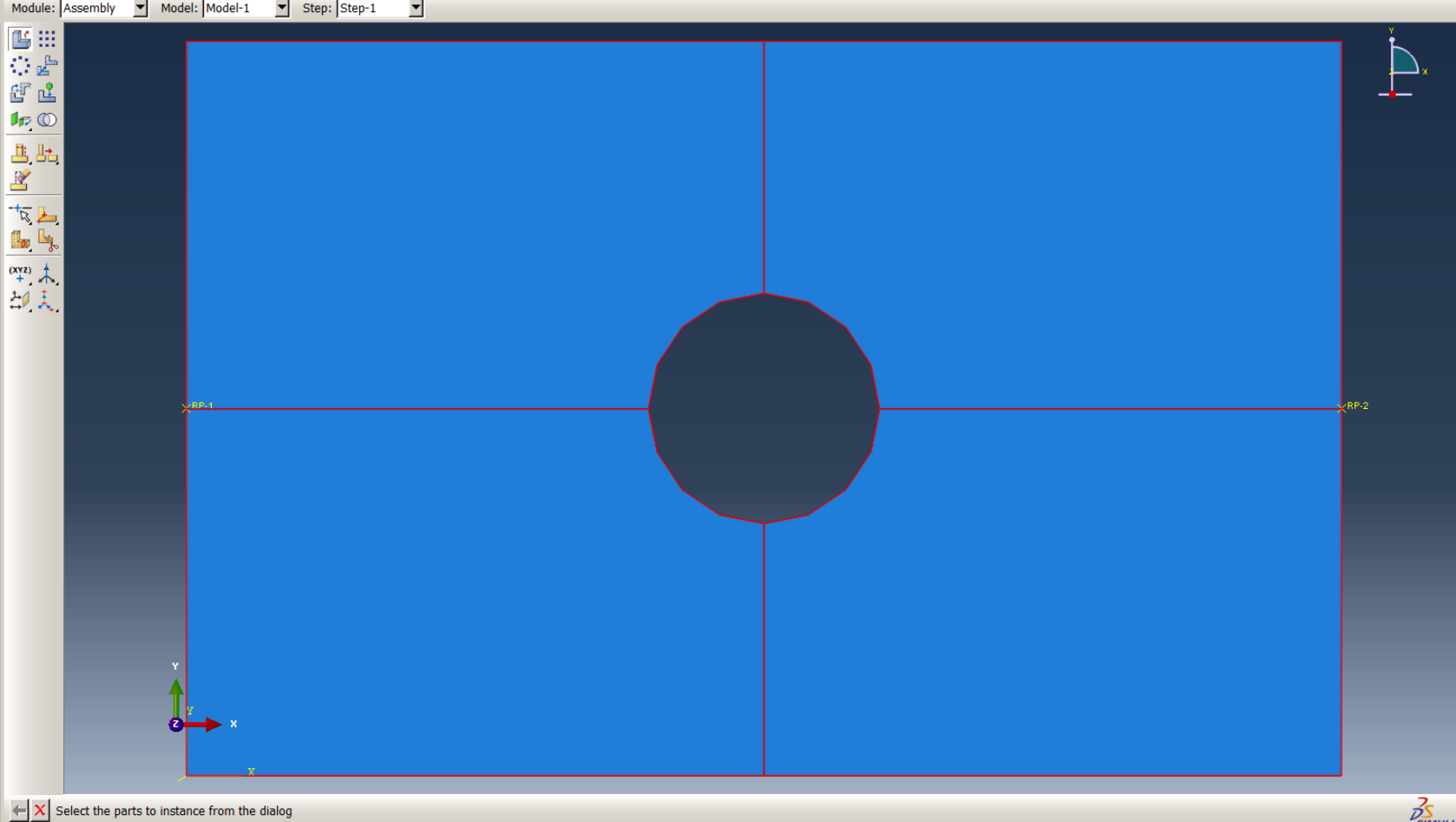
Connector Sections

- Fields
- Amplitudes
- Loads (1)
- BCs (1)
- Predefined Fields
- Remeshing Rules
- Sketches

Annotations

Analysis

- Jobs (1)
- Adaptivity Processes
- Co-executions



Select the parts to instance from the dialog

XY data has been created from Path "Path-1".
XY data has been created from Path "Path-1".
XY data has been created from Path "Path-1".
XY data has been created from Path "Path-1".
XY data has been created from Path "Path-1".

Model Database

- Models (1)
 - Model-1
 - Parts (1)
 - Materials (1)
 - Sections (1)
 - Profiles
 - Assembly
 - Steps (2)
 - Field Output Requests (1)
 - History Output Requests (1)
 - Time Points
 - ALE Adaptive Mesh Constraints
 - Interactions
 - Interaction Properties
 - Contact Controls
 - Contact Initializations
 - Constraints (2)
 - Connector Sections
 - Fields
 - Amplitudes
 - Loads (1)
 - BCs (1)
 - Predefined Fields
 - Remeshing Rules
 - Sketches
 - Annotations
 - Analysis
 - Jobs (1)
 - Adaptivity Processes
 - Co-executions

Step Manager

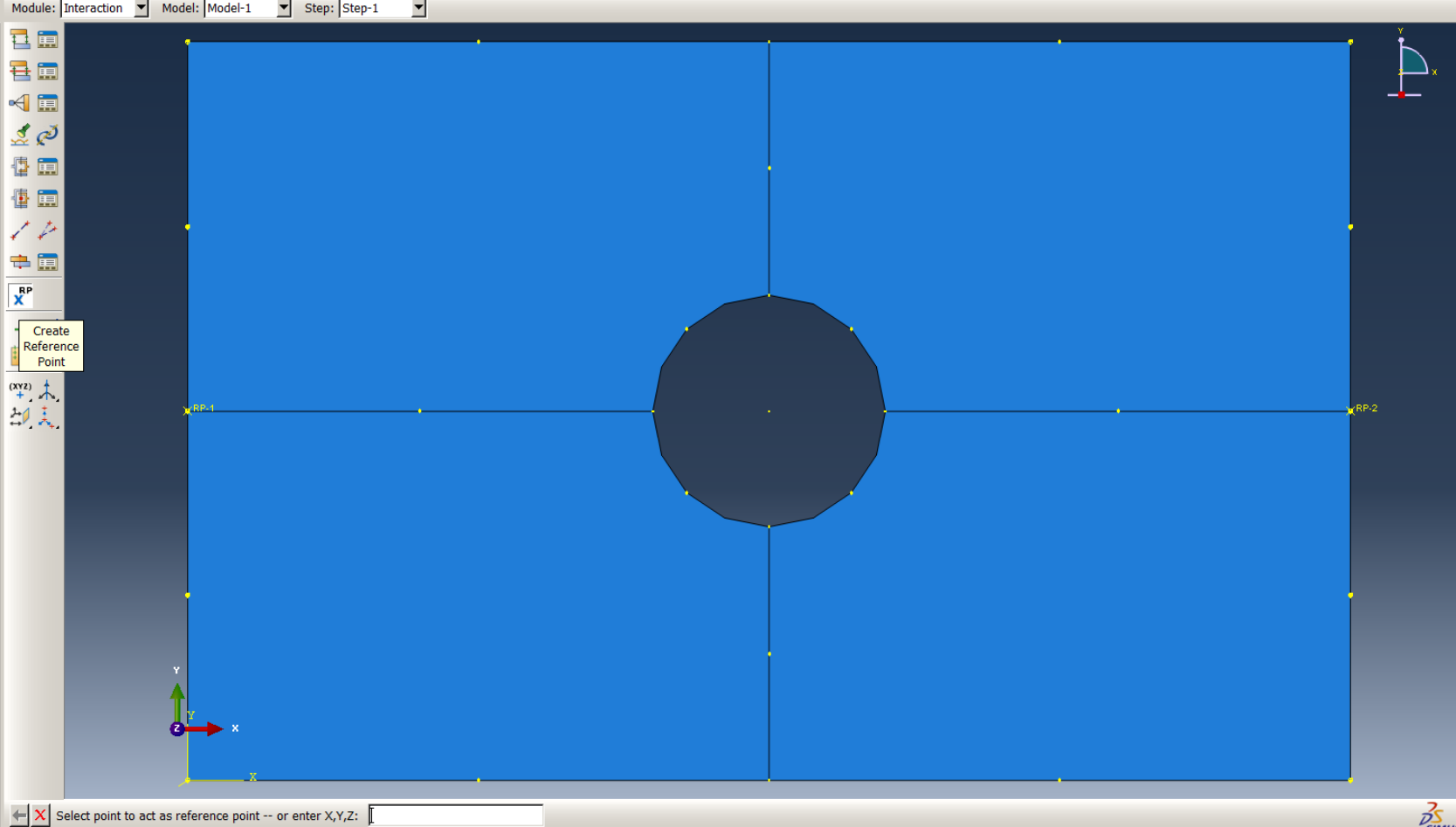
Name	Procedure	Nlgeom	Time
Initial	(Initial)	N/A	N/A
Step-1	Static, General	OFF	1

Create... Edit... Replace... Rename... Delete... Nlgeom... Dismiss

XY data has been created from Path "Path-1".
XY data has been created from Path "Path-1".
XY data has been created from Path "Path-1".
XY data has been created from Path "Path-1".
XY data has been created from Path "Path-1".

Model Database

- Models (1)
 - Model-1
 - Parts (1)
 - Materials (1)
 - Sections (1)
 - Profiles
 - Assembly
 - Steps (2)
 - Field Output Requests (1)
 - History Output Requests (1)
 - Time Points
 - ALE Adaptive Mesh Constraints
 - Interactions
 - Interaction Properties
 - Contact Controls
 - Contact Initializations
 - Constraints (2)
 - Connector Sections
 - Fields
 - Amplitudes
 - Loads (1)
 - BCs (1)
 - Predefined Fields
 - Remeshing Rules
 - Sketches
 - Annotations
 - Analysis
 - Jobs (1)
 - Adaptivity Processes
 - Co-executions



XY data has been created from Path "Path-1".
XY data has been created from Path "Path-1".
XY data has been created from Path "Path-1".
XY data has been created from Path "Path-1".
XY data has been created from Path "Path-1".

Name	Type
✓ Constraint-1	Rigid body
✓ Constraint-2	Rigid body

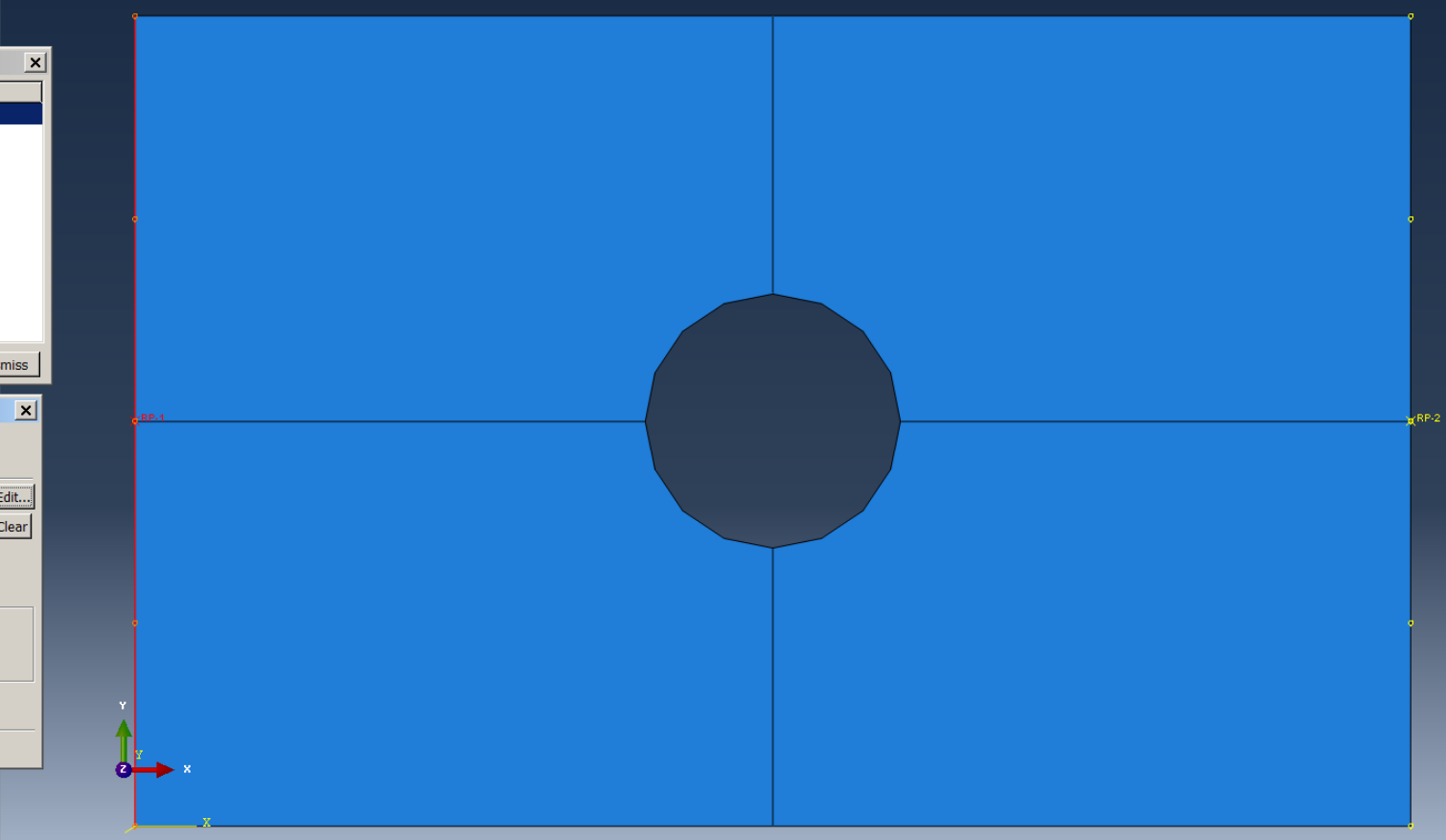
Edit Constraint

Name: Constraint-1
Type: Rigid Body

Region type	Region
Body (elements)	(None)
Pin (nodes)	(None)
Tie (nodes)	(Picked)
Analytical Surface	(None)

Reference Point
Point: (Picked) Edit...
 Adjust point to center of mass at start of analysis.
 Constrain selected regions to be isothermal (coupled thermal-stress analysis only)

OK Cancel



Fill out the Edit Constraint dialog

XY data has been created from Path "Path-1".
XY data has been created from Path "Path-1".
XY data has been created from Path "Path-1".
XY data has been created from Path "Path-1".

Model Database

Models (1)

Load Manager

Name	Step-1
✓ Load-1	Created

Edit...
Move Left
Move Right
Activate
Deactivate

Step procedure: Static, General
Load type: Concentrated force
Load status: Created in this step

Create... Copy... Rename... Delete... Dismiss

Edit Load

Name: Load-1
Type: Concentrated force
Step: Step-1 (Static, General)
Region: (Picked) Edit Region...

CSYS: (Global) Edit... Create...

Distribution: Uniform Create...

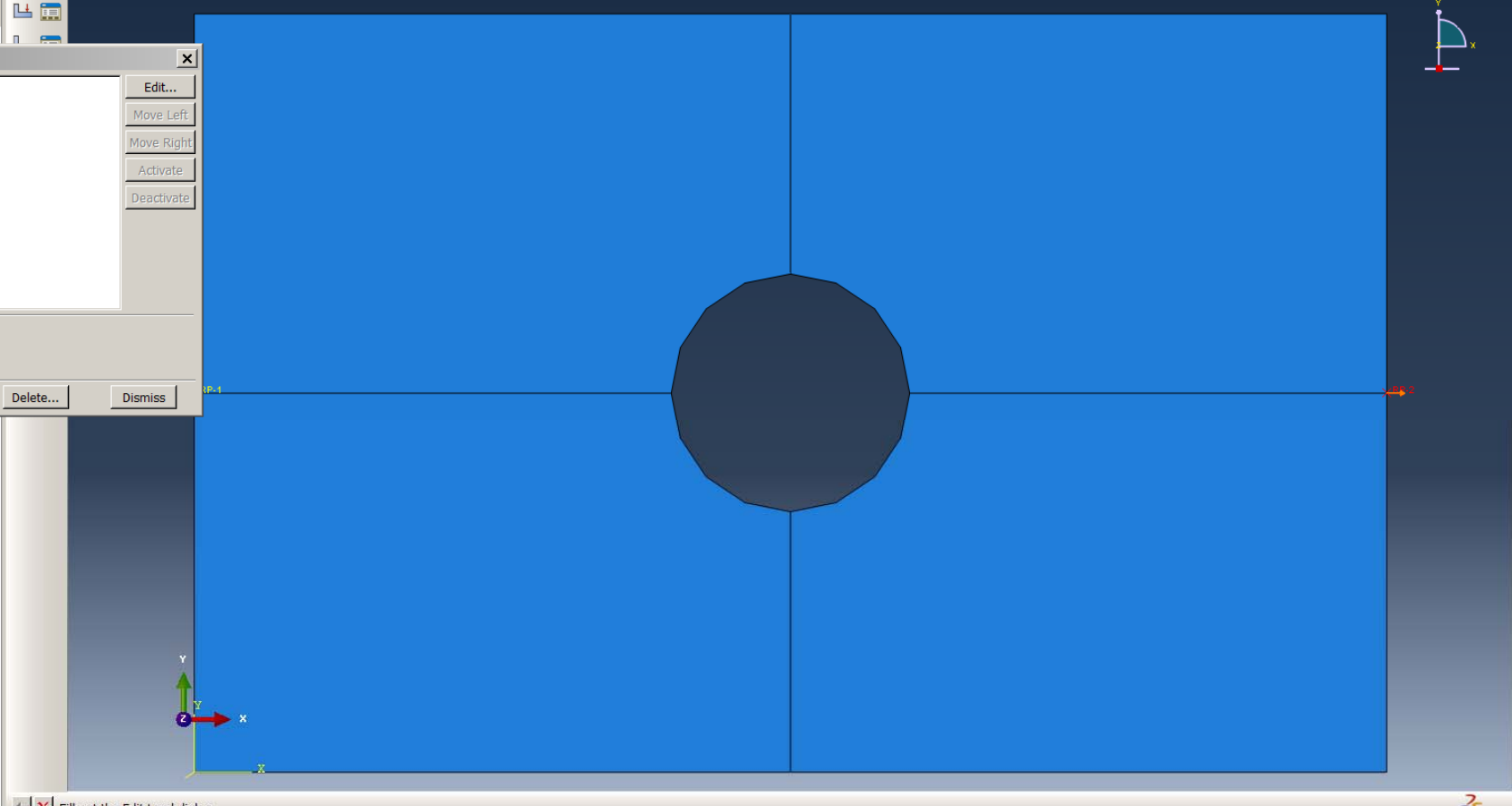
CF1: 125000
CF2: 0
CF3: 0

Amplitude: (Ramp) Create...

Follow nodal rotation

Note: Force will be applied per node.

OK Cancel



Fill out the Edit Load dialog

XY data has been created from Path "Path-1"
XY data has been created from Path "Path-1"
XY data has been created from Path "Path-1"
XY data has been created from Path "Path-1"
XY data has been created from Path "Path-1"

Model Database

- Models (1)
 - Model-1
 - Parts (1)

Module: Load Model: Model-1 Step: Initial

Name	Initial	Step-1
BC-1	Created	Propagated

Step procedure:
Boundary condition type: Displacement/Rotation
Boundary condition status: Created in this step

Create... Copy... Rename... Delete... Dismiss

Edit Boundary Condition

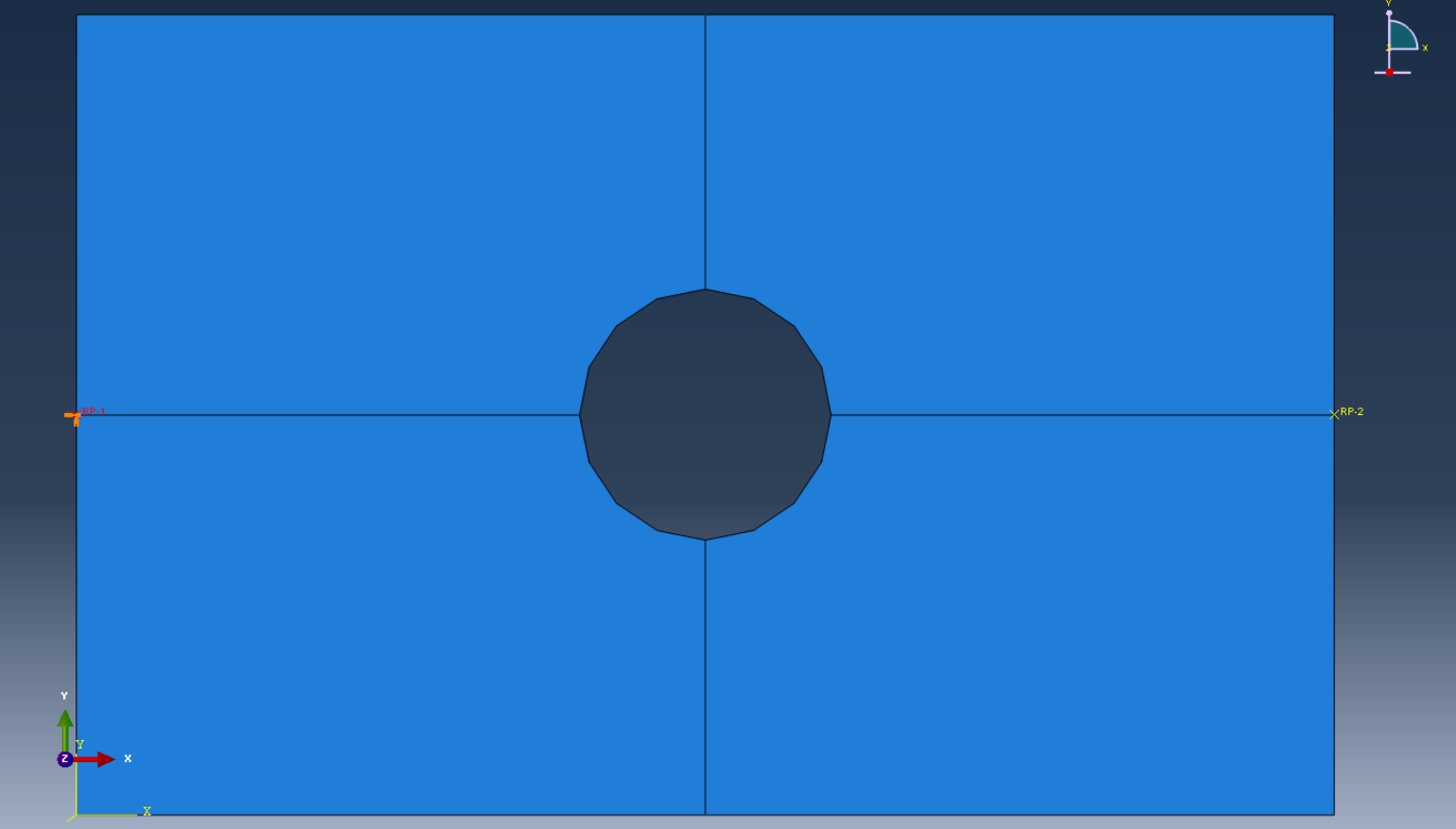
Name: BC-1
Type: Displacement/Rotation
Step: Initial
Region: (Picked) Edit Region...

CSYS: (Global) Edit... Create...

- U1
- U2
- U3
- UR1
- UR2
- UR3

Note: The displacement value will be maintained in subsequent steps.

OK Cancel



Edit Boundary Condition dialog

XY data has been cr
XY data has been cr
XY data has been cr
XY data has been cr
XY data has been cr

Model Database

Models (1)

- Model-1
 - Parts (1)
 - Materials (1)
 - Sections (1)
 - Profiles
 - Assembly
 - Steps (2)
 - Field Output Requests
 - History Output Reques
 - Time Points
 - ALE Adaptive Mesh Co
 - Interactions
 - Interaction Properties
 - Contact Controls
 - Contact Initializations
 - Constraints (2)
 - Connector Sections
 - Fields
 - Amplitudes
 - Loads (1)
 - BCs (1)
 - Predefined Fields
 - Remeshing Rules
 - Sketches
- Annotations
- Analysis
 - Jobs (1)
 - Adaptivity Processes
 - Co-executions

Module: Mesh Model: Model-1 Object: Assembly Part: Part-1

Seed Part

Global Seeds

Sizing Controls

Approximate global size:

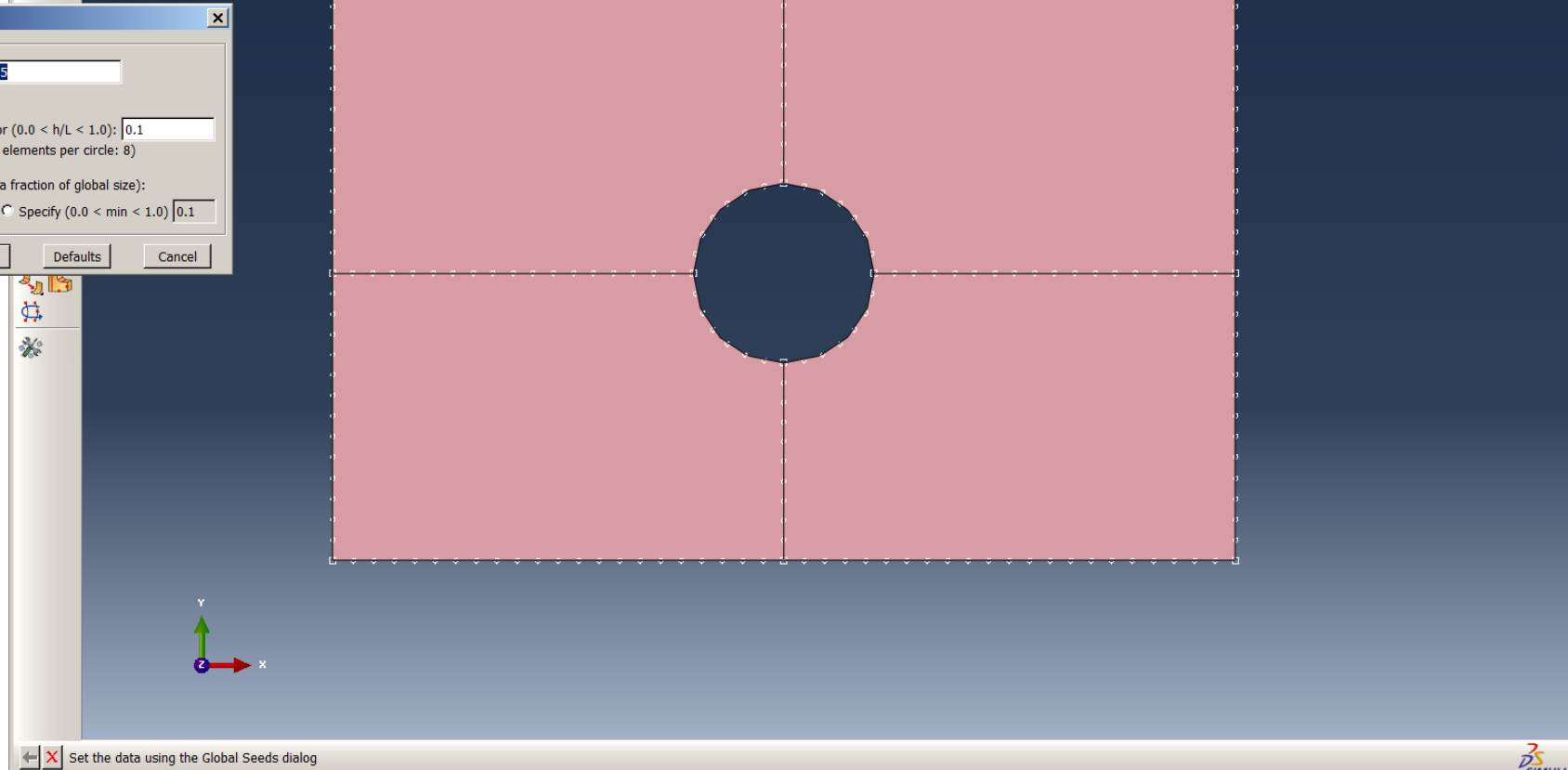
Curvature control

Maximum deviation factor ($0.0 < h/L < 1.0$):
(Approximate number of elements per circle: 8)

Minimum size factor (as a fraction of global size):

Use default (0.1) Specify ($0.0 < \text{min} < 1.0$)

OK Apply Defaults Cancel

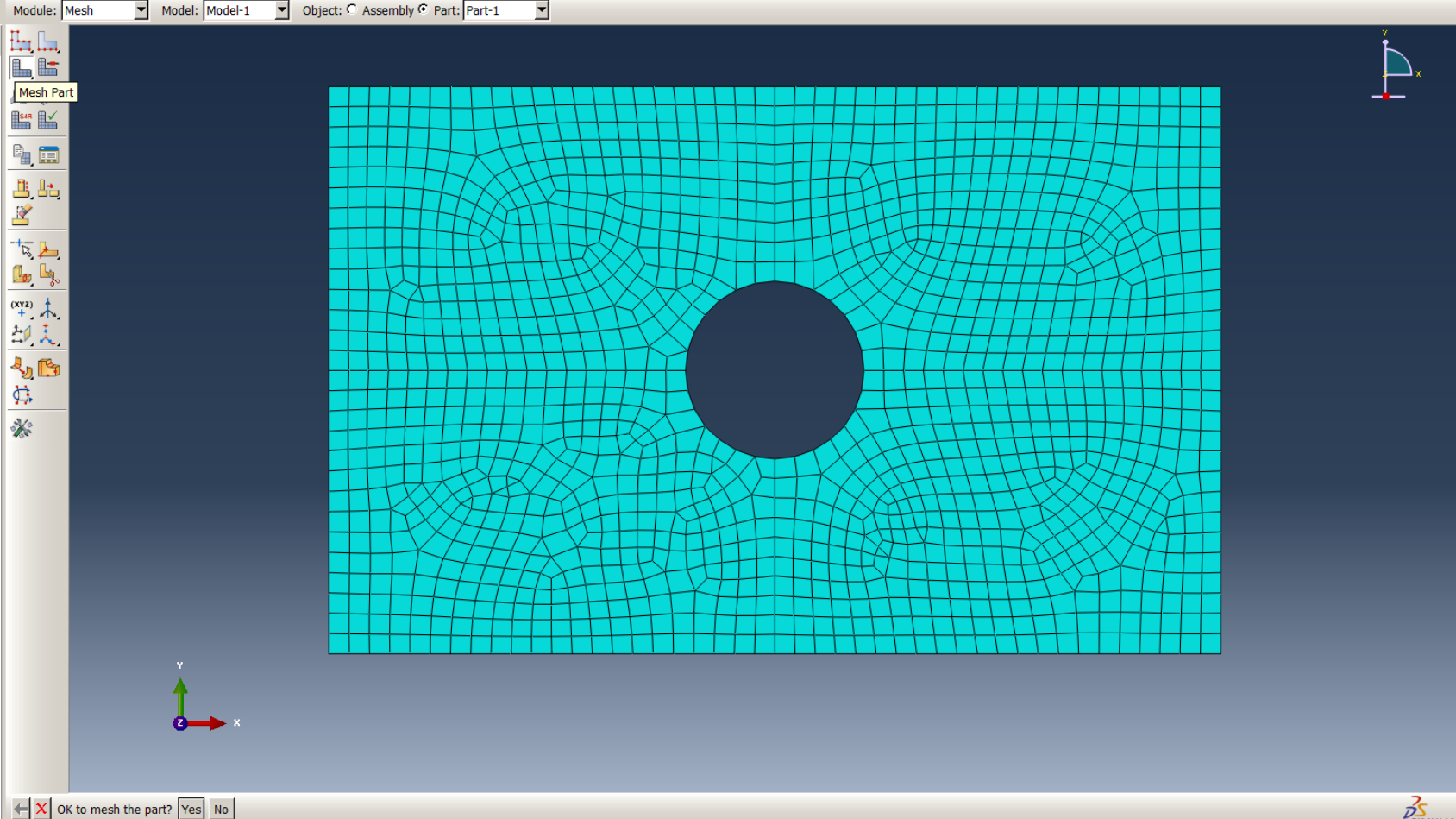


Set the data using the Global Seeds dialog

XY data has been created from Path "Path-1".
XY data has been created from Path "Path-1".
XY data has been created from Path "Path-1".
XY data has been created from Path "Path-1".
XY data has been created from Path "Path-1".

Model Database

- Models (1)
 - Model-1
 - Parts (1)
 - Materials (1)
 - Sections (1)
 - Profiles
 - Assembly
 - Steps (2)
 - Field Output Requests (1)
 - History Output Requests (1)
 - Time Points
 - ALE Adaptive Mesh Constraints
 - Interactions
 - Interaction Properties
 - Contact Controls
 - Contact Initializations
 - Constraints (2)
 - Connector Sections
 - Fields
 - Amplitudes
 - Loads (1)
 - BCs (1)
 - Predefined Fields
 - Remeshing Rules
 - Sketches
 - Annotations
 - Analysis
 - Jobs (1)
 - Adaptivity Processes
 - Co-executions



XY data has been created from Path "Path-1".
XY data has been created from Path "Path-1".
XY data has been created from Path "Path-1".
XY data has been created from Path "Path-1".
1392 elements have been generated on part: Part-1

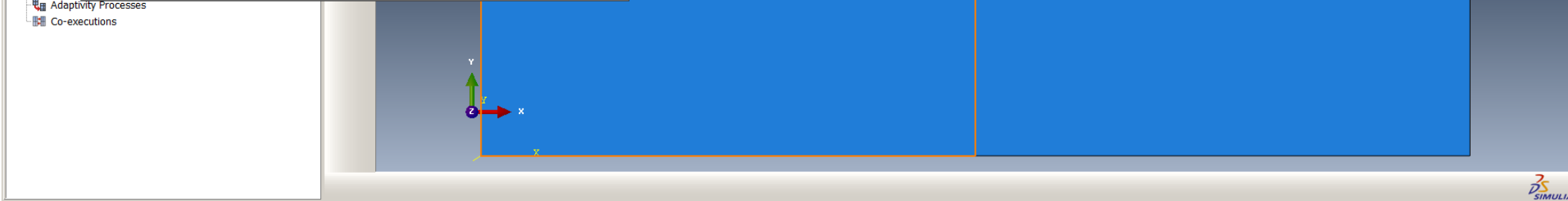
Name	Model	Type	Status
Kirsch	Model-1	Full Analysis	Completed

Kirsch Monitor

Job: Kirsch Status: Completed

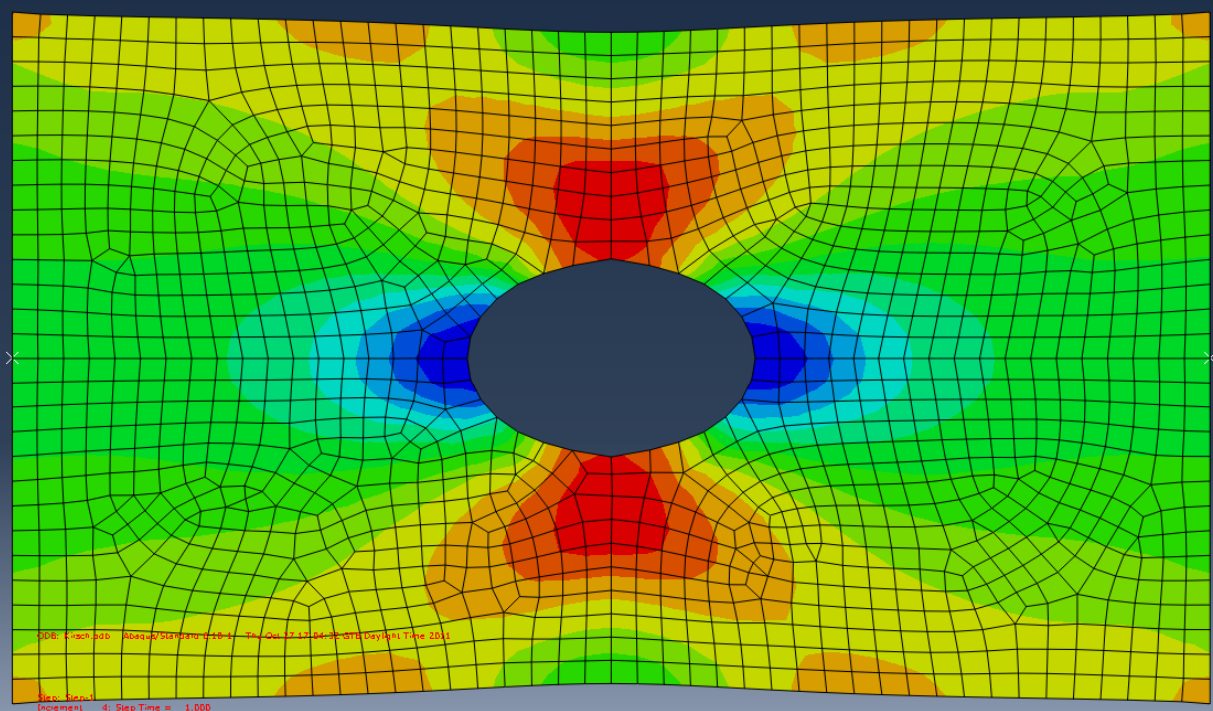
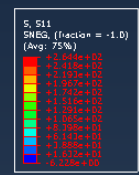
Step	Increment	Att	Severe Discon Iter	Equil Iter	Total Iter	Total Time/Freq	Step Time/LPF	Time/LPF Inc
1	1	1U	0	4	4	0	0	1
1	1	2	0	2	2	0.25	0.25	0.25
1	2	1	0	1	1	0.5	0.5	0.25
1	3	1	0	4	4	0.875	0.875	0.375
1	4	1	0	3	3	1	1	0.125

Search Text
Text to find: Match case



XY data has been created from Path "Path-1".
XY data has been created from Path "Path-1".
XY data has been created from Path "Path-1".
XY data has been created from Path "Path-1".
1392 elements have been generated on part: Part-1

- Session Data
- Output Databases (1)
- Spectrums (7)
- XYPlots (1)
- XYData (1)
- Paths (1)
- Display Groups (1)
- Free Body Cuts
- Movies
- Images



ODB: Kirsch.odb Abaqus/Viewer 6.10-2 Thu Oct 27 12:46:30 CDT Daylight Time 2011

Doc: Kirsch...
Document: 4, Step Time = 1.000
Primary Var: S, S11
Deformed Var: 1, Deformation Scale Factor: +1.146e+02

XY data has been created from Path "Path-1"
XY data has been created from Path "Path-1"
XY data has been created from Path "Path-1"
XY data has been created from Path "Path-1"
1392 elements have been generated on part:

XY Data Manager