

Analiza static liniara

Cadru simplu rezemat o deschidere

Vizualizarea reactiunilor si deplasarilor

Name	Description	Status

Create Part

Name: Cadru

Modeling Space

3D 2D Planar Axisymmetric

Type

Deformable
 Discrete rigid
 Analytical rigid
 Eulerian

Options

None available

Base Feature

Shape	Type
<input type="radio"/> Solid	Planar
<input type="radio"/> Shell	
<input checked="" type="radio"/> Wire	
<input type="radio"/> Point	

Approximate size: 2000

Continue... Cancel

- Contact Initializations
- Constraints
- Connector Sections
- Fields
 - Amplitudes
 - Loads
 - BCs
 - Predefined Fields
 - Remeshing Rules
 - Sketches
- Annotations
- Analysis
 - Jobs
 - Adaptivity Processes
 - Co-executions

Fill out the Create Part dialog

Name	Description	Status

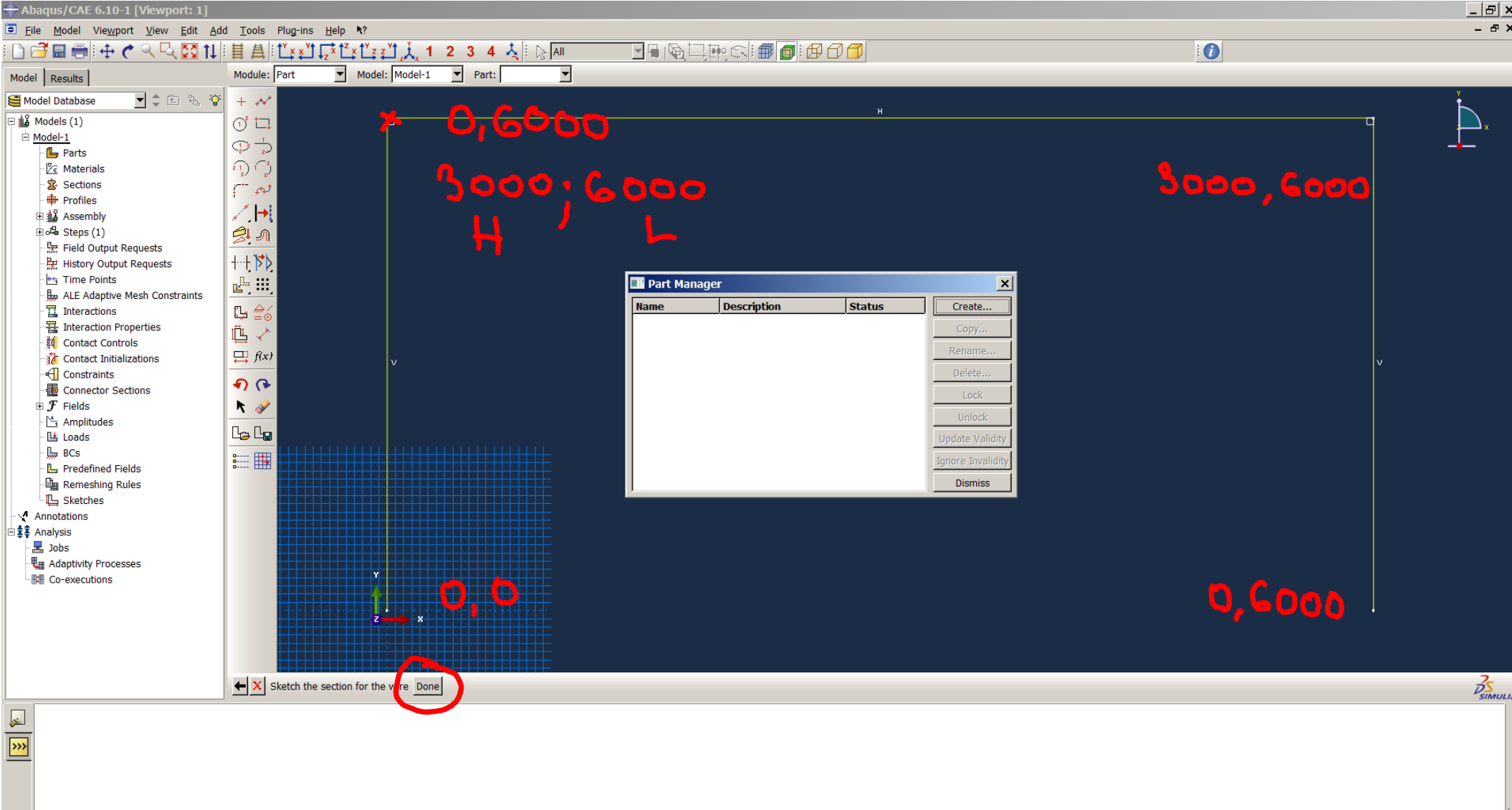
Create...
Copy...
Rename...
Delete...
Lock
Unlock
Update Validity
Ignore Invalidity
Dismiss

- Contact Initializations
- Constraints
- Connector Sections
- Fields
 - Amplitudes
 - Loads
 - BCs
 - Predefined Fields
 - Remeshing Rules
 - Sketches
- Annotations
- Analysis
 - Jobs
 - Adaptivity Processes
 - Co-executions



Pick an end point for the line--or enter X,Y: 0,0

U.M. [mm]



Model Database

- Models (1)
 - Model-1
 - Parts (1)
 - Materials
 - Sections
 - Profiles
 - Assembly
 - Steps (1)
 - Field Output Requests
 - History Output Requests
 - Time Points
 - ALE Adaptive Mesh Constraints
 - Interactions
 - Interaction Properties
 - Contact Controls
 - Contact Initializations
 - Constraints
 - Connector Sections
 - Fields
 - Amplitudes
 - Loads
 - BCs
 - Predefined Fields
 - Remeshing Rules
 - Sketches
 - Annotations
 - Analysis
 - Jobs
 - Adaptivity Processes
 - Co-executions

Part Manager

Name	Description	Status
Cadru	3D Deformable	

Buttons: Create..., Copy..., Rename..., Delete..., Lock, Unlock, Update Validity, Ignore Invalidity, Dismiss

Start >>>

Model Database

- Models (1)
 - Model-1
 - Parts (1)
 - Materials
 - Sections
 - Profiles
 - Assembly
 - Steps (1)
 - Field Output Requests
 - History Output Requests
 - Time Points
 - ALE Adaptive Mesh Constraints
 - Interactions
 - Interaction Properties
 - Contact Controls
 - Contact Initializations
 - Constraints
 - Connector Sections
 - Fields
 - Amplitudes
 - Loads
 - BCs
 - Predefined Fields
 - Remeshing Rules
 - Sketches
 - Annotations
 - Analysis
 - Jobs
 - Adaptivity Processes
 - Co-executions

Module: Part

- Part
- Property
- Assembly
- Step
- Interaction
- Load
- Mesh
- Job
- Visualization
- Sketch



Navigation and status area containing icons for home, back, forward, and a status bar with the text 'RO' and a right-pointing arrow.

Model Database

- Models (1)
 - Model-1
 - Parts (1)
 - Materials
 - Sections
 - Profiles
 - Assembly
 - Steps (1)
 - Field Output Requests
 - History Output Requests
 - Time Points
 - ALE Adaptive Mesh Constraints
 - Interactions
 - Interaction Properties
 - Contact Controls
 - Contact Initializations
 - Constraints
 - Connector Sections
 - Fields
 - Amplitudes
 - Loads
 - BCs
 - Predefined Fields
 - Remeshing Rules
 - Sketches
 - Annotations
 - Analysis
 - Jobs
 - Adaptivity Processes
 - Co-executions

Material Manager

Name

Create...

Edit...

Copy...

Rename...

Delete...

Evaluate...

Dismiss

Edit Material

Name: Otel

Description:

Edit...

Material Behaviors

General Mechanical Thermal Other

- Elasticity
 - Elastic
 - Hyperelastic
 - Hyperfoam
 - Low Density Foam
 - Hypogelastic
 - Porous Elastic
 - Viscoelastic
- Plasticity
- Damage for Ductile Metals
- Damage for Traction Separation Laws
- Damage for Fiber-Reinforced Composites
- Damage for Elastomers
- Deformation Plasticity
- Damping
- Expansion
- Brittle Cracking
- Egs
- Viscosity

OK Cancel

Model Database

- Models (1)
 - Model-1
 - Parts (1)
 - Materials
 - Sections
 - Profiles
 - Assembly
 - Steps (1)
 - Field Output Requests
 - History Output Requests
 - Time Points
 - ALE Adaptive Mesh Constraints
 - Interactions
 - Interaction Properties
 - Contact Controls
 - Contact Initializations
 - Constraints
 - Connector Sections
 - Fields
 - Amplitudes
 - Loads
 - BCs
 - Predefined Fields
 - Remeshing Rules
 - Sketches
 - Annotations
 - Analysis
 - Jobs
 - Adaptivity Processes
 - Co-executions

Material Manager

Name

Create...
Edit...
Copy...
Rename...
Delete...
Evaluate...
Dismiss

Edit Material

Name: Otel
Description: Edit...

Material Behaviors

Elastic

General Mechanical Thermal Other Delete

Elastic

Type: Isotropic Suboptions

Use temperature-dependent data

Number of field variables: 0

Moduli time scale (for viscoelasticity): Long-term

No compression

No tension

Data

	Young's Modulus	Poisson's Ratio
1	210000	0.3

OK Cancel

- Model Database
- Models (1)
 - Model-1
 - Parts (1)
 - Materials (1)
 - Sections
 - Profiles
 - Assembly
 - Steps (1)
 - Field Output Requests
 - History Output Requests
 - Time Points
 - ALE Adaptive Mesh Constraints
 - Interactions
 - Interaction Properties
 - Contact Controls
 - Contact Initializations
 - Constraints
 - Connector Sections
 - Fields
 - Amplitudes
 - Loads
 - BCs
 - Predefined Fields
 - Remeshing Rules
 - Sketches
 - Annotations
 - Analysis
 - Jobs
 - Adaptivity Processes
 - Co-executions



Material Manager

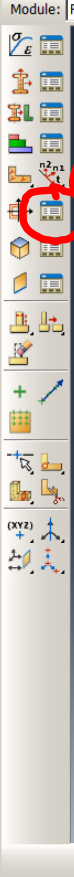
Name
Otel

Create...
Edit...
Copy...
Rename...
Delete...
Evaluate...
Dismiss



Model Database

- Models (1)
 - Model-1
 - Parts (1)
 - Materials (1)
 - Sections
 - Profiles
 - Assembly
 - Steps (1)
 - Field Output Requests
 - History Output Requests
 - Time Points
 - ALE Adaptive Mesh Constraints
 - Interactions
 - Interaction Properties
 - Contact Controls
 - Contact Initializations
 - Constraints
 - Connector Sections
 - Fields
 - Amplitudes
 - Loads
 - BCs
 - Predefined Fields
 - Remeshing Rules
 - Sketches
 - Annotations
 - Analysis
 - Jobs
 - Adaptivity Processes
 - Co-executions



Profile Manager

Name	Shape
------	-------

Create... Edit... Copy... Rename... Delete... Dismiss

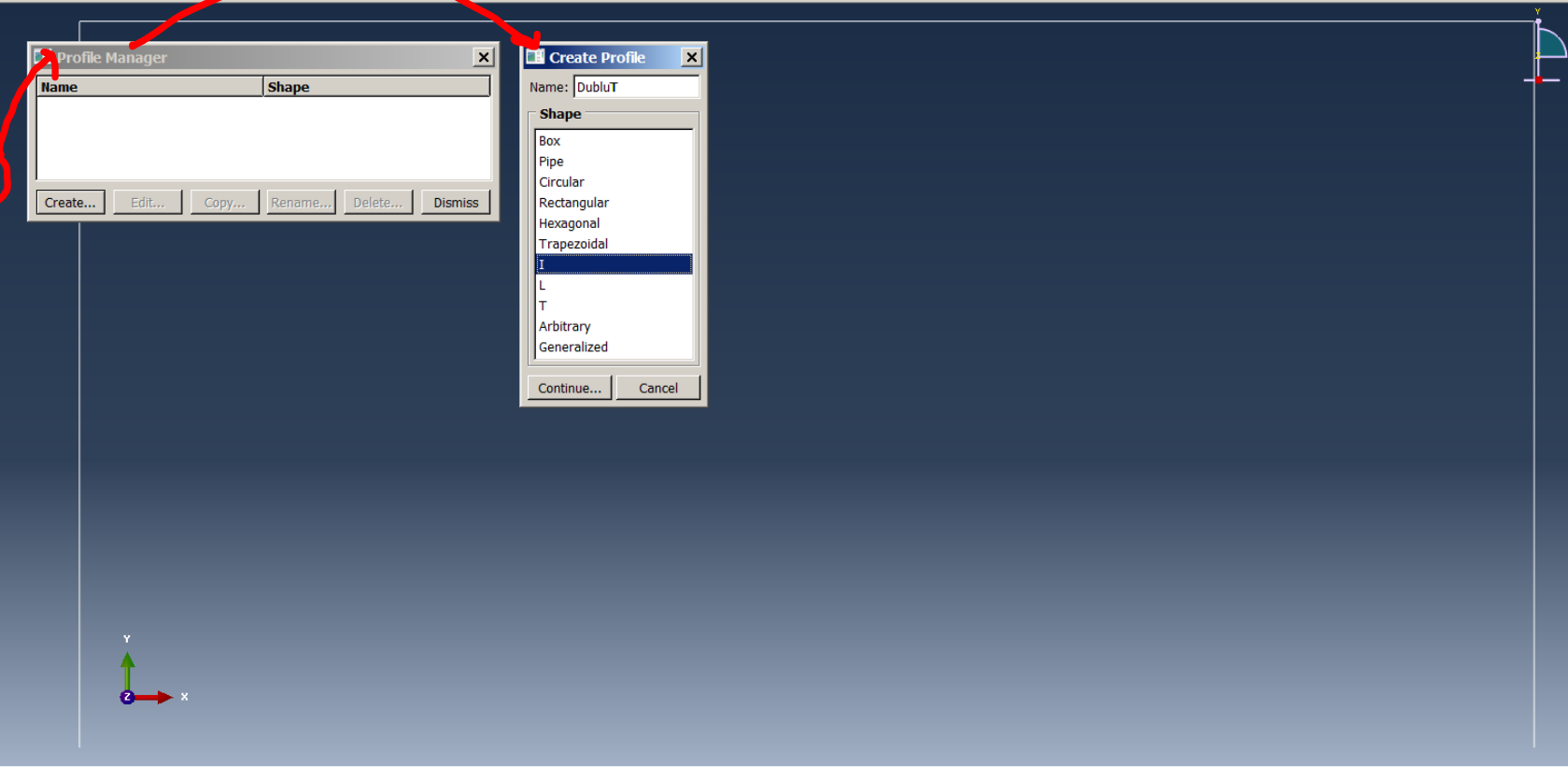
Create Profile

Name: DubluT

Shape

- Box
- Pipe
- Circular
- Rectangular
- Hexagonal
- Trapezoidal
- I
- L
- T
- Arbitrary
- Generalized

Continue... Cancel



- Model Database
- Models (1)
 - Model-1
 - Parts (1)
 - Materials (1)
 - Sections
 - Profiles
 - Assembly
 - Steps (1)
 - Field Output Requests
 - History Output Requests
 - Time Points
 - ALE Adaptive Mesh Constraints
 - Interactions
 - Interaction Properties
 - Contact Controls
 - Contact Initializations
 - Constraints
 - Connector Sections
 - Fields
 - Amplitudes
 - Loads
 - BCs
 - Predefined Fields
 - Remeshing Rules
 - Sketches
 - Annotations
 - Analysis
 - Jobs
 - Adaptivity Processes
 - Co-executions



Name	Shape
------	-------

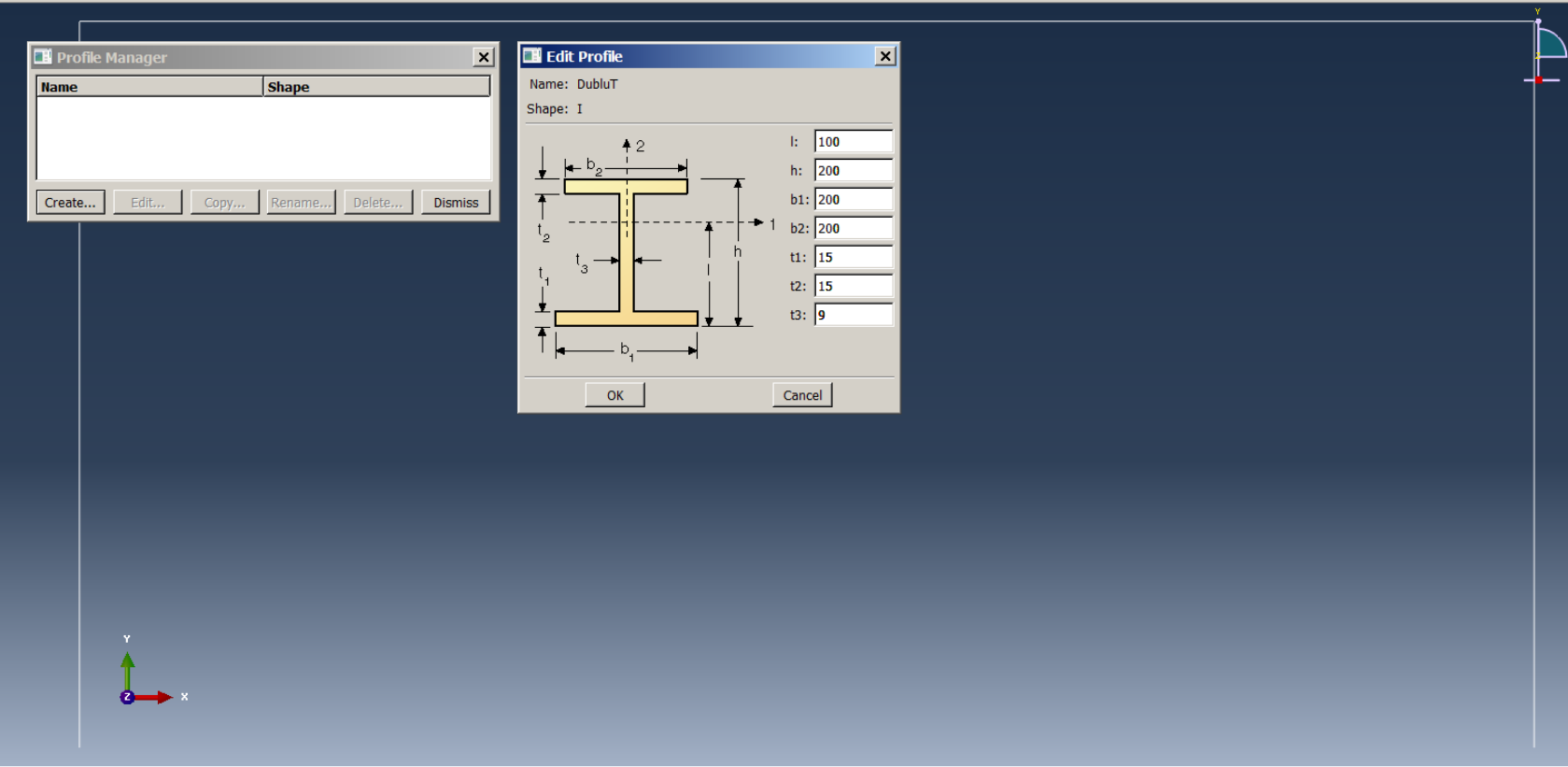
Create... Edit... Copy... Rename... Delete... Dismiss

Edit Profile

Name: DublinT
Shape: I

l:	100
h:	200
b1:	200
b2:	200
t1:	15
t2:	15
t3:	9

OK Cancel

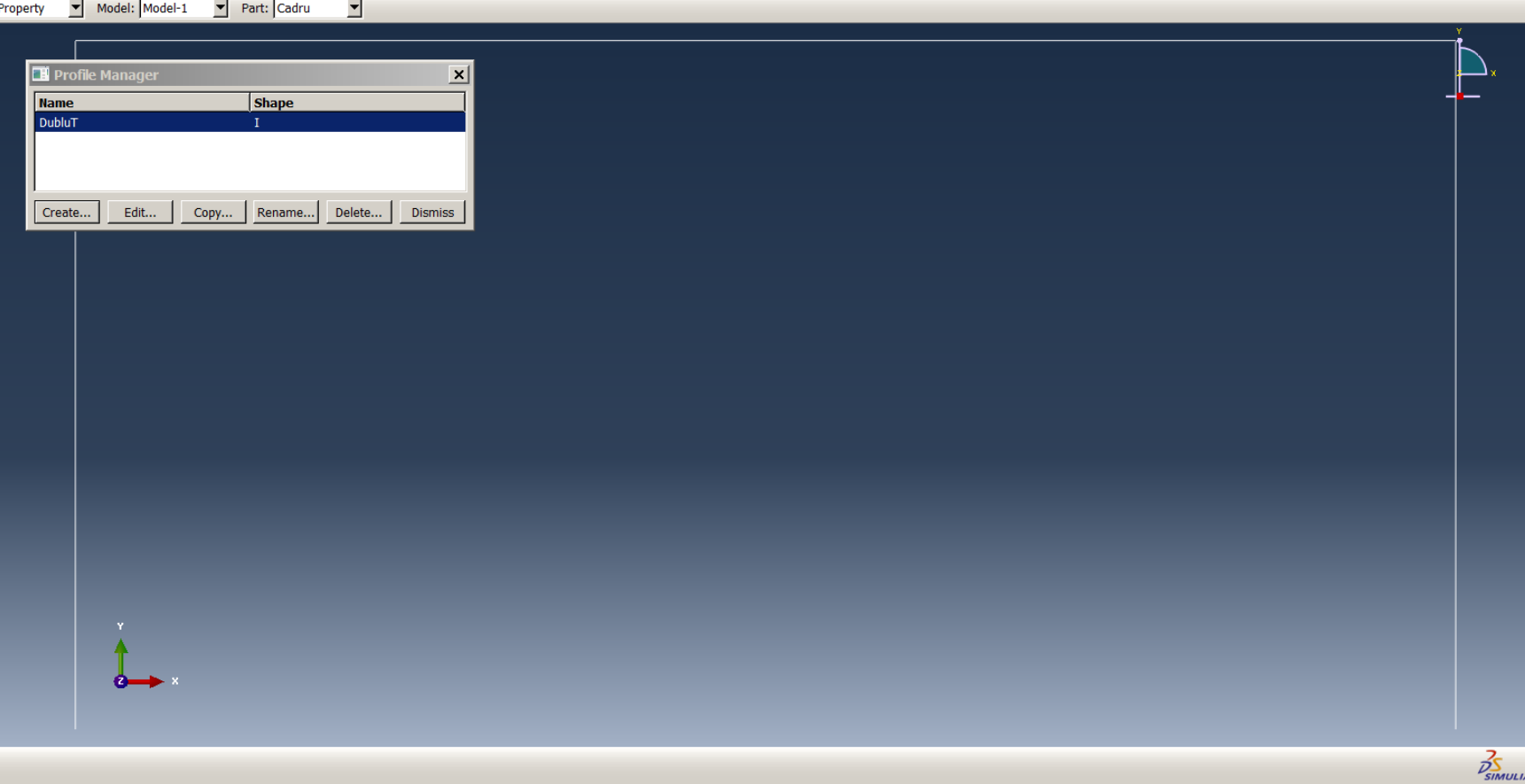


- Model Database
- Models (1)
 - Model-1
 - Parts (1)
 - Materials (1)
 - Sections
 - Profiles (1)
 - Assembly
 - Steps (1)
 - Field Output Requests
 - History Output Requests
 - Time Points
 - ALE Adaptive Mesh Constraints
 - Interactions
 - Interaction Properties
 - Contact Controls
 - Contact Initializations
 - Constraints
 - Connector Sections
 - Fields
 - Amplitudes
 - Loads
 - BCs
 - Predefined Fields
 - Remeshing Rules
 - Sketches
 - Annotations
 - Analysis
 - Jobs
 - Adaptivity Processes
 - Co-executions



Name	Shape
DubluT	I

Create... Edit... Copy... Rename... Delete... Dismiss



Model Database

- Models (1)
 - Model-1
 - Parts (1)
 - Materials (1)
 - Sections
 - Profiles (1)
 - Assembly
 - Steps (1)
 - Field Output Requests
 - History Output Requests
 - Time Points
 - ALE Adaptive Mesh Constraints
 - Interactions
 - Interaction Properties
 - Contact Controls
 - Contact Initializations
 - Constraints
 - Connector Sections
 - Fields
 - Amplitudes
 - Loads
 - BCs
 - Predefined Fields
 - Remeshing Rules
 - Sketches
 - Annotations
 - Analysis
 - Jobs
 - Adaptivity Processes
 - Co-executions

Section Manager

Name	Type
------	------

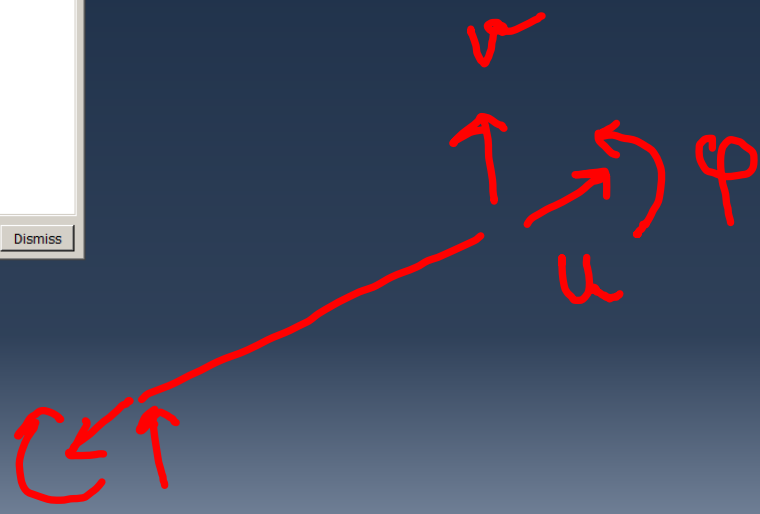
Create... Edit... Copy... Rename... Delete... Dismiss

Create Section

Name: Element

Category	Type
<input type="radio"/> Solid	Beam
<input type="radio"/> Shell	Truss
<input checked="" type="radio"/> Beam	
<input type="radio"/> Fluid	
<input type="radio"/> Other	

Continue... Cancel



Model Database

- Models (1)
 - Model-1
 - Parts (1)
 - Materials (1)
 - Sections
 - Profiles (1)
 - Assembly
 - Steps (1)
 - Field Output Requests
 - History Output Requests
 - Time Points
 - ALE Adaptive Mesh Constraints
 - Interactions
 - Interaction Properties
 - Contact Controls
 - Contact Initializations
 - Constraints
 - Connector Sections
 - Fields
 - Amplitudes
 - Loads
 - BCs
 - Predefined Fields
 - Remeshing Rules
 - Sketches
 - Annotations
 - Analysis
 - Jobs
 - Adaptivity Processes
 - Co-executions

Name	Type
------	------

Create... Edit... Copy... Rename... Delete... Dismiss

Edit Beam Section

Name: Element
Type: Beam

Section integration: During analysis Before analysis

Profile name: Create...

Profile shape:

Basic | Stiffness | Fluid Inertia

Material name: Create...

Section Poisson's ratio:

Temperature variation:
 Linear by gradients
 Interpolated from temperature points

OK Cancel

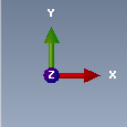


- Model Database
- Models (1)
 - Model-1
 - Parts (1)
 - Materials (1)
 - Sections (1)
 - Profiles (1)
 - Assembly
 - Steps (1)
 - Field Output Requests
 - History Output Requests
 - Time Points
 - ALE Adaptive Mesh Constraints
 - Interactions
 - Interaction Properties
 - Contact Controls
 - Contact Initializations
 - Constraints
 - Connector Sections
 - Fields
 - Amplitudes
 - Loads
 - BCs
 - Predefined Fields
 - Remeshing Rules
 - Sketches
 - Annotations
 - Analysis
 - Jobs
 - Adaptivity Processes
 - Co-executions



Name	Type
Element	Beam

Create... Edit... Copy... Rename... Delete... Dismiss



Model Database

- Models (1)
 - Model-1
 - Parts (1)
 - Materials (1)
 - Sections (1)
 - Profiles (1)
 - Assembly
 - Steps (1)
 - Field Output Requests
 - History Output Requests
 - Time Points
 - ALE Adaptive Mesh Constraints
 - Interactions
 - Interaction Properties
 - Contact Controls
 - Contact Initializations
 - Constraints
 - Connector Sections
 - Fields
 - Amplitudes
 - Loads
 - BCs
 - Predefined Fields
 - Remeshing Rules
 - Sketches
 - Annotations
 - Analysis
 - Jobs
 - Adaptivity Processes
 - Co-executions

Section Assignment Manager

Section Name (Type)	Material Name	Region
---------------------	---------------	--------

Create... Edit... Delete... Dismiss

Select the regions to be assigned a section Done Sets...

Model Database

- Models (1)
 - Model-1
 - Parts (1)
 - Materials (1)
 - Sections (1)
 - Profiles (1)
 - Assembly
 - Steps (1)
 - Field Output Requests
 - History Output Requests
 - Time Points
 - ALE Adaptive Mesh Constraints
 - Interactions
 - Interaction Properties
 - Contact Controls
 - Contact Initializations
 - Constraints
 - Connector Sections
 - Fields
 - Amplitudes
 - Loads
 - BCs
 - Predefined Fields
 - Remeshing Rules
 - Sketches
 - Annotations
 - Analysis
 - Jobs
 - Adaptivity Processes
 - Co-executions

Section Assignment Manager

Section Name (Type)	Material Name	Region
---------------------	---------------	--------

Create... Edit... Delete... Dismiss

Edit Section Assignment

Region: (Picked)

Section: Element Create...

Note: List contains only sections applicable to the selected regions.

Type: Beam

Material: Otel

OK Cancel

Fill out the Edit Section Assignment dialog

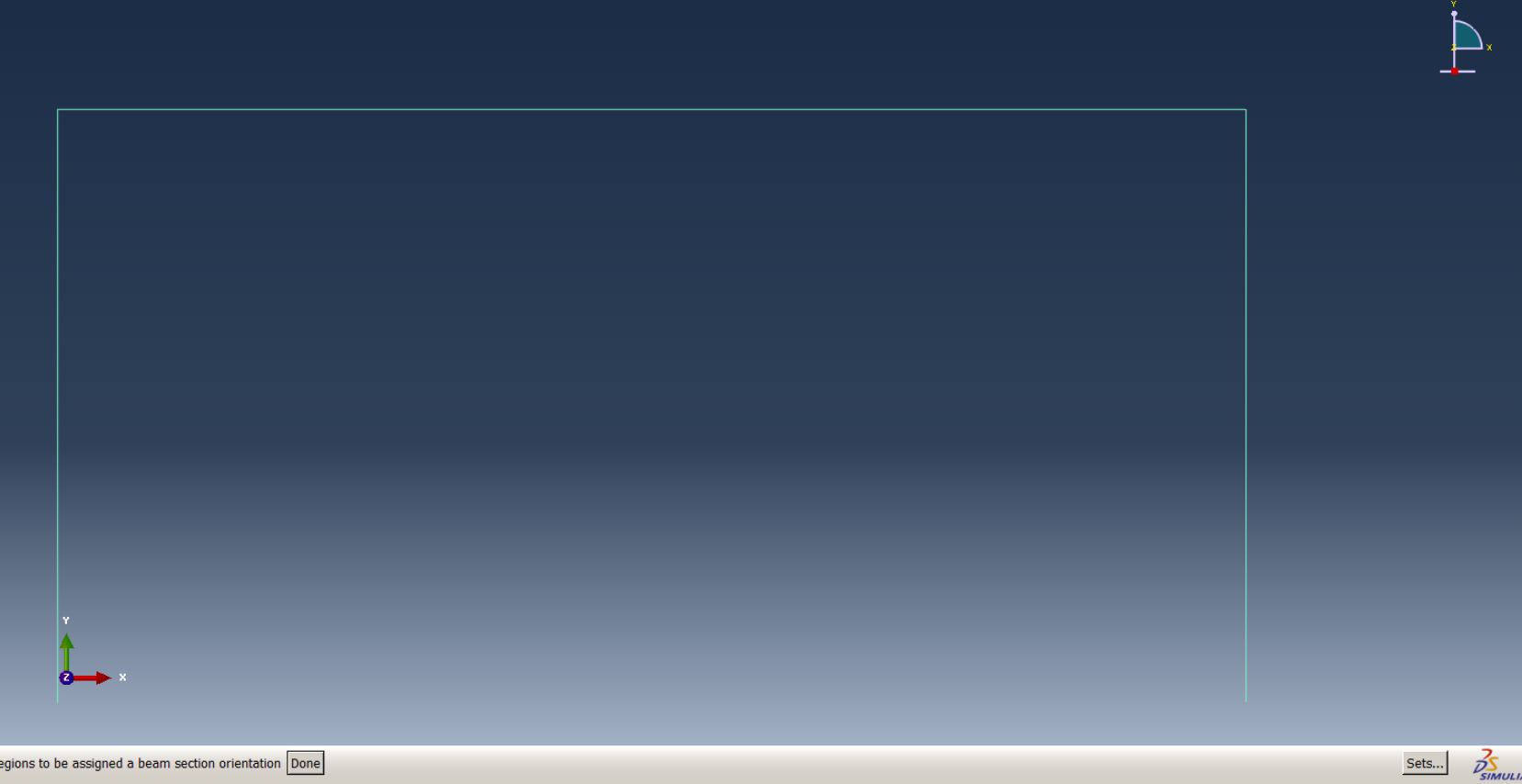
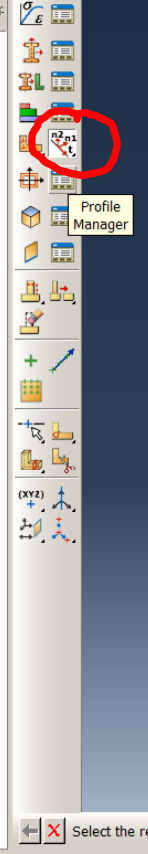
Start



Model Database

- Models (1)
 - Model-1
 - Parts (1)
 - Materials (1)
 - Sections (1)
 - Profiles (1)
 - Assembly
 - Steps (1)
 - Field Output Requests
 - History Output Requests
 - Time Points
 - ALE Adaptive Mesh Constraints
 - Interactions
 - Interaction Properties
 - Contact Controls
 - Contact Initializations
 - Constraints
 - Connector Sections
 - Fields
 - Amplitudes
 - Loads
 - BCs
 - Predefined Fields
 - Remeshing Rules
 - Sketches
 - Annotations
 - Analysis
 - Jobs
 - Adaptivity Processes
 - Co-executions

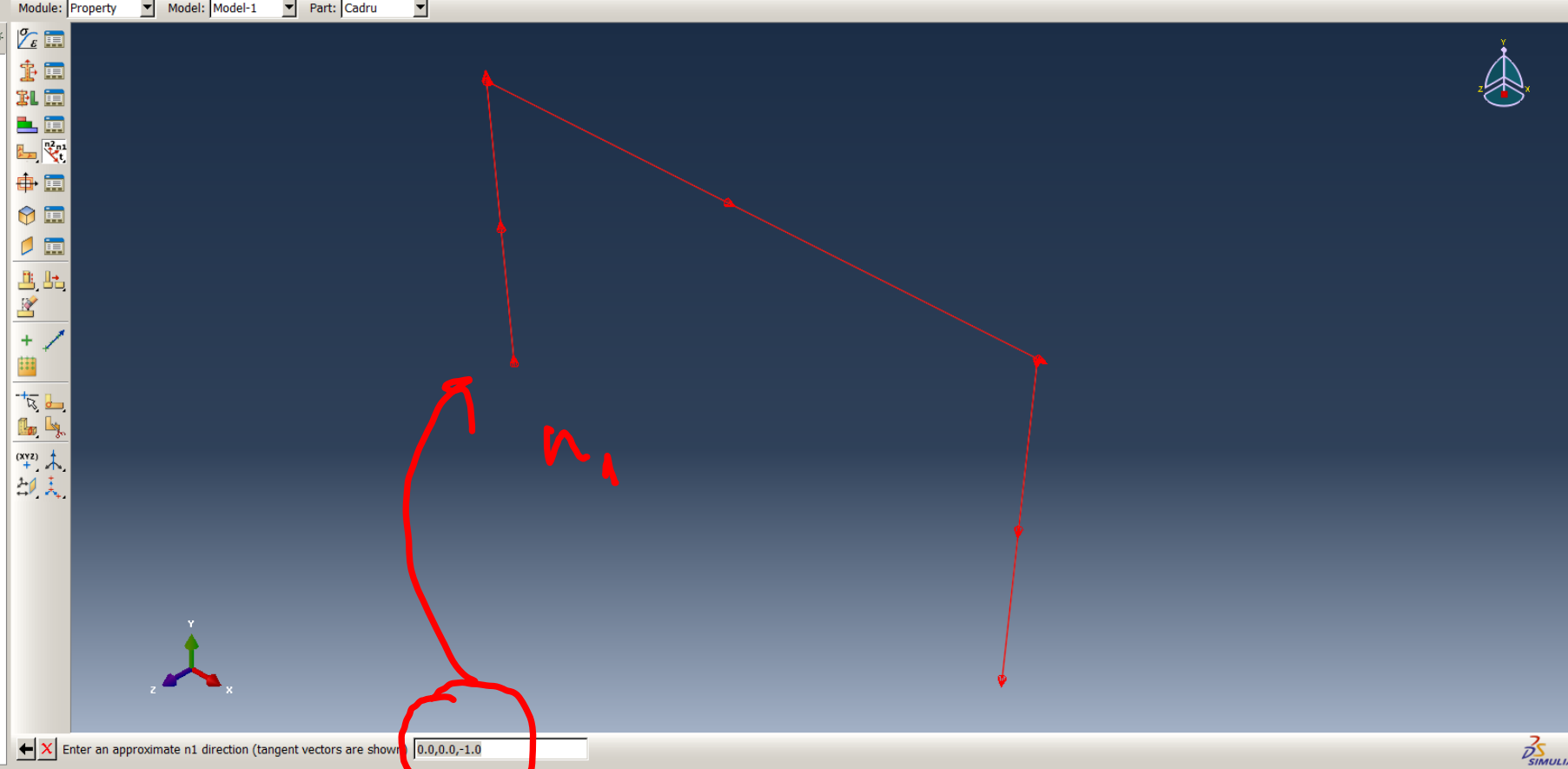
Profile Manager



Select the regions to be assigned a beam section orientation Done

Sets... SIMULIA

- Model Database
- Models (1)
 - Model-1
 - Parts (1)
 - Materials (1)
 - Sections (1)
 - Profiles (1)
 - Assembly
 - Steps (1)
 - Field Output Requests
 - History Output Requests
 - Time Points
 - ALE Adaptive Mesh Constraints
 - Interactions
 - Interaction Properties
 - Contact Controls
 - Contact Initializations
 - Constraints
 - Connector Sections
 - Fields
 - Amplitudes
 - Loads
 - BCs
 - Predefined Fields
 - Remeshing Rules
 - Sketches
 - Annotations
 - Analysis
 - Jobs
 - Adaptivity Processes
 - Co-executions



Model Database

- Models (1)
 - Model-1
 - Parts (1)
 - Materials (1)
 - Sections (1)
 - Profiles (1)
 - Assembly
 - Steps (1)
 - Field Output Requests
 - History Output Requests
 - Time Points
 - ALE Adaptive Mesh Constraints
 - Interactions
 - Interaction Properties
 - Contact Controls
 - Contact Initializations
 - Constraints
 - Connector Sections
 - Fields
 - Amplitudes
 - Loads
 - BCs
 - Predefined Fields
 - Remeshing Rules
 - Sketches
 - Annotations
 - Analysis
 - Jobs
 - Adaptivity Processes
 - Co-executions

Click OK to confirm input

Start

Model Database

- Models (1)
 - Model-1
 - Parts (1)
 - Materials (1)
 - Sections (1)
 - Profiles (1)
 - Assembly
 - Steps (1)
 - Field Output Reqs
 - History Output Reqs
 - Time Points
 - ALE Adaptive Meshing
 - Interactions
 - Interaction Properties
 - Contact Controls
 - Contact Initializations
 - Constraints
 - Connector Sections
 - Fields
 - Amplitudes
 - Loads
 - BCs
 - Predefined Fields
 - Remeshing Rules
 - Sketches
 - Annotations
 - Analysis
 - Jobs
 - Adaptivity Processes
 - Co-executions

Save...
F2
F3
F4
F5
F6
F7
Specify...
Parallel
Perspective
Show Model Tree Ctrl+T
Toolbars
View Options...
Graphics Options...
Light Options...
Image/Movie Options...
Part Display Options...
Ply Stack Plot Options...

Property Model: Model-1 Part: Cadru

Select the regions to be assigned a beam section orientation Done

Beam orientations have been assigned to the selected regions.

Model Database

Models (1)

Part Display Options

General Datum Mesh

Render Style

Wireframe Hidden Shaded

Geometry

Show dotted lines in hidden render style

Show edges in shaded render style

Show silhouette edges

Highlight only visible entities

Face highlighting: Stippling

Curve refinement: Coarse

Note: The refinement setting will be applied only to the current part.

Show reference representation

Mesh

Show: Exterior edges

Show edges in shaded render style

Highlight only visible entities

Beam Orientations

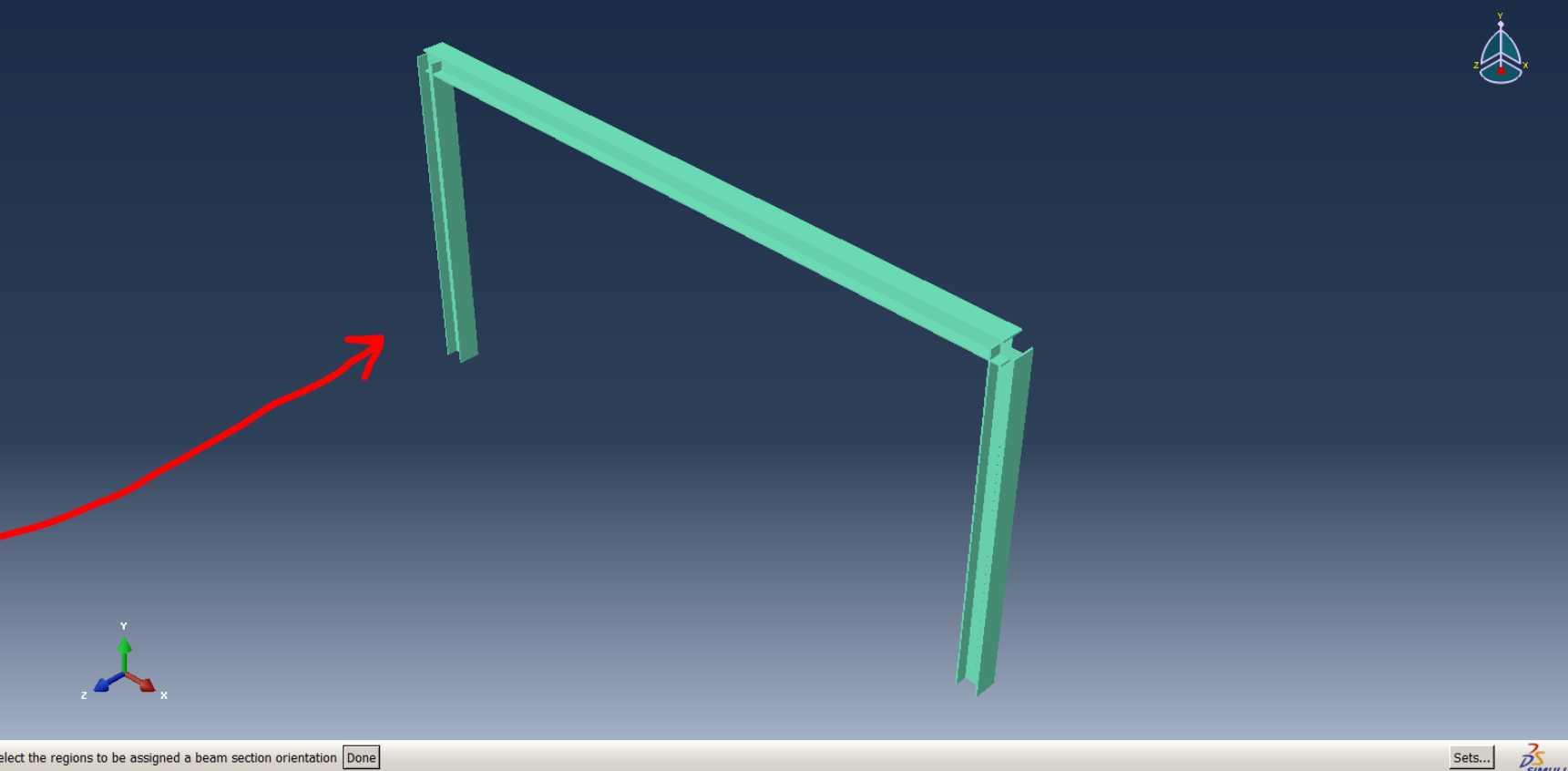
Render beam profiles

Scale factor: 1

Render shell thickness

Scale factor: 1

OK Apply Defaults Cancel



Select the regions to be assigned a beam section orientation Done

Beam orientations have been assigned to the selected regions.

Model Database

Mod Create Instance

Parts

- Cadru

Instance Type

Dependent (mesh on part)

Independent (mesh on instance)

Note: To change a Dependent instance's mesh, you must edit its part's mesh.

Auto-offset from other instances

OK Apply Cancel

Fields

- Amplitudes
- Loads
- BCs
- Predefined Fields
- Remeshing Rules
- Sketches

Annotations

Analysis

- Jobs
- Adaptivity Processes
- Co-executions



Select the parts to instance from the dialog

Beam orientations have been assigned to the selected regions.

Model Database

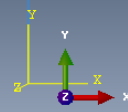
- Models (1)
 - Model-1
 - Parts (1)
 - Materials (1)
 - Sections (1)
 - Profiles (1)
 - Assembly
 - Steps (1)
 - Field Output Requests
 - History Output Requests
 - Time Points
 - ALE Adaptive Mesh Constraints
 - Interactions
 - Interaction Properties
 - Contact Controls
 - Contact Initializations
 - Constraints
 - Connector Sections
 - Fields
 - Amplitudes
 - Loads
 - BCs
 - Predefined Fields
 - Remeshing Rules
 - Sketches
 - Annotations
 - Analysis
 - Jobs
 - Adaptivity Processes
 - Co-executions

Module: Step Model: Model-1 Step: Initial

Step Manager

Name	Procedure	Nlgeom	Time
✓ Initial	(Initial)	N/A	N/A

Create... Edit... Replace... Rename... Delete... Nlgeom... Dismiss



Create Step

Name: Incarcarea

Insert new step after:
Initial

Procedure type: General

- Dynamic, Explicit
- Dynamic, Temp-disp, Explicit
- Geostatic
- Heat transfer
- Mass diffusion
- Soils
- Static, General
- Static, Riks

Continue... Cancel

Beam orientations have been assigned to the selected regions.

- Model Database
- Models (1)
 - Model-1
 - Parts (1)
 - Materials (1)
 - Sections (1)
 - Profiles (1)
 - Assembly
 - Steps (1)
 - Field Output Requests
 - History Output Requests
 - Time Points
 - ALE Adaptive Mesh Constraints
 - Interactions
 - Interaction Properties
 - Contact Controls
 - Contact Initializations
 - Constraints
 - Connector Sections
 - Fields
 - Amplitudes
 - Loads
 - BCs
 - Predefined Fields
 - Remeshing Rules
 - Sketches
 - Annotations
 - Analysis
 - Jobs
 - Adaptivity Processes
 - Co-executions

Name	Procedure	Nlgeom	Time
Initial	(Initial)	N/A	N/A

Create Step

Name: Incarcarea

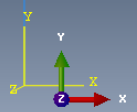
Insert new step after

- Initial

Procedure type: General

- Dynamic, Explicit
- Dynamic, Temp-disp, Explicit
- Geostatic
- Heat transfer
- Mass diffusion
- Soils
- Static, General
- Static, Riks

Continue... Cancel



Beam orientations have been assigned to the selected regions.

Model Database

- Models (1)
 - Model-1
 - Parts (1)
 - Materials (1)
 - Sections (1)
 - Profiles (1)
 - Assembly
 - Steps (1)
 - Field Output Requests
 - History Output Requests
 - Time Points
 - ALE Adaptive Mesh Constraints
 - Interactions
 - Interaction Properties
 - Contact Controls
 - Contact Initializations
 - Constraints
 - Connector Sections
 - Fields
 - Amplitudes
 - Loads
 - BCs
 - Predefined Fields
 - Remeshing Rules
 - Sketches
 - Annotations
 - Analysis
 - Jobs
 - Adaptivity Processes
 - Co-executions

Name	Procedure	Nlgeom	Time
Initial	(Initial)	N/A	N/A

Create... Edit... Replace... Rename... Delete... Nlgeom... Dismiss

Edit Step

Name: Incarcarea
Type: Static, General

Basic Incrementation Other

Description:

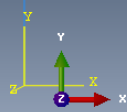
Time period:

Nlgeom: Off (This setting controls the inclusion of nonlinear effects of large displacements and affects subsequent steps.)
 On

Automatic stabilization:

Include adiabatic heating effects

OK Cancel

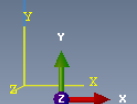


Beam orientations have been assigned to the selected regions.

- Model Database
- Models (1)
 - Model-1
 - Parts (1)
 - Materials (1)
 - Sections (1)
 - Profiles (1)
 - Assembly
 - Steps (2)
 - Field Output Requests (1)
 - History Output Requests (1)
 - Time Points
 - ALE Adaptive Mesh Constraints
 - Interactions
 - Interaction Properties
 - Contact Controls
 - Contact Initializations
 - Constraints
 - Connector Sections
 - Fields
 - Amplitudes
 - Loads
 - BCs
 - Predefined Fields
 - Remeshing Rules
 - Sketches
 - Annotations
 - Analysis
 - Jobs
 - Adaptivity Processes
 - Co-executions

Name	Procedure	Nongeom	Time
✓ Initial	(Initial)	N/A	N/A
✓ Incarcarea	Static, General	OFF	1

Buttons: Create... Edit... Replace... Rename... Delete... Nongeom... Dismiss



Beam orientations have been assigned to the selected regions.

Model Database

- Models (1)
 - Model-1
 - Parts (1)
 - Materials (1)
 - Sections (1)
 - Profiles (1)
 - Assembly
 - Steps (2)
 - Field Output Requests (1)
 - History Output Requests (1)
 - Time Points
 - ALE Adaptive Mesh Constraints
 - Interactions
 - Interaction Properties
 - Contact Controls
 - Contact Initializations
 - Constraints
 - Connector Sections
 - Fields
 - Amplitudes
 - Loads
 - BCs
 - Predefined Fields
 - Remeshing Rules
 - Sketches
 - Annotations
 - Analysis
 - Jobs
 - Adaptivity Processes
 - Co-executions

Boundary Condition Manager

Name	Initial	Incarcare
------	---------	-----------

Step procedure:
Boundary condition type:
Boundary condition status:

Create... Copy... Rename... Delete... Dismiss

Create Boundary Condition

Name: Incastreea
Step: Initial

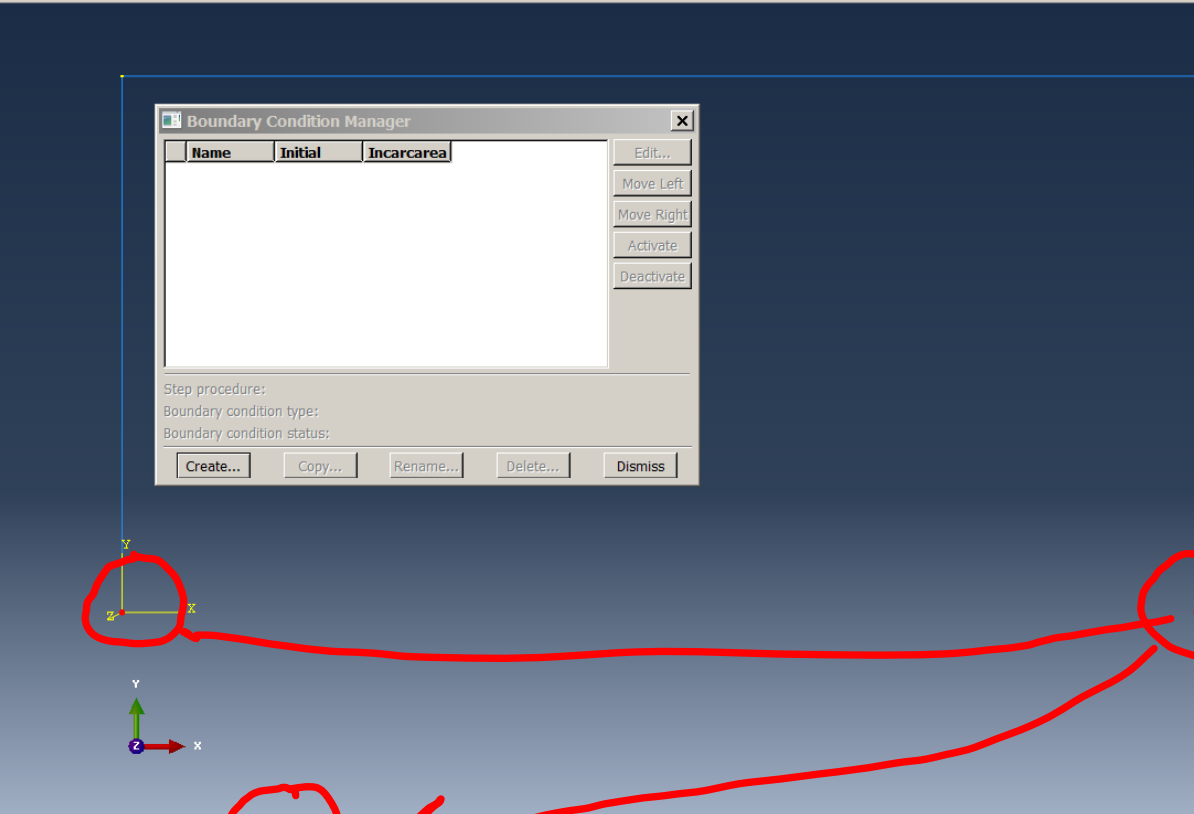
Procedure:

Category: Mechanical
Types for Selected Step:
Symmetry/Antisymmetry/Encastre
Displacement/Rotation
Velocity/Angular velocity
Acceleration/Angular acceleration
Connector displacement
Connector velocity
Connector acceleration

Continue... Cancel

Beam orientations have been assigned to the selected regions.

- Model Database
- Models (1)
 - Model-1
 - Parts (1)
 - Materials (1)
 - Sections (1)
 - Profiles (1)
 - Assembly
 - Steps (2)
 - Field Output Requests (1)
 - History Output Requests (1)
 - Time Points
 - ALE Adaptive Mesh Constraints
 - Interactions
 - Interaction Properties
 - Contact Controls
 - Contact Initializations
 - Constraints
 - Connector Sections
 - Fields
 - Amplitudes
 - Loads
 - BCs
 - Predefined Fields
 - Remeshing Rules
 - Sketches
 - Annotations
 - Analysis
 - Jobs
 - Adaptivity Processes
 - Co-executions



Boundary Condition Manager

Name	Initial	Incarcarea
------	---------	------------

Step procedure:
Boundary condition type:
Boundary condition status:

Create... Copy... Rename... Delete... Dismiss

Select regions for the boundary condition Done

Model Database

- Models (1)
 - Model-1
 - Parts (1)
 - Materials (1)
 - Sections (1)
 - Profiles (1)
 - Assembly
 - Steps (2)
 - Field Output Requests (1)
 - History Output Requests (1)
 - Time Points
 - ALE Adaptive Mesh Constraints
 - Interactions
 - Interaction Properties
 - Contact Controls
 - Contact Initializations
 - Constraints
 - Connector Sections
 - Fields
 - Amplitudes
 - Loads
 - BCs
 - Predefined Fields
 - Remeshing Rules
 - Sketches
 - Annotations
 - Analysis
 - Jobs
 - Adaptivity Processes
 - Co-executions

Boundary Condition Manager

Name	Initial	Incarcare
------	---------	-----------

Step procedure:
Boundary condition type:
Boundary condition status:

Create... Copy... Rename... Delete... Dismiss

Edit Boundary Condition

Name: Incastrea
Type: Displacement/Rotation
Step: Initial
Region: (Picked)

CSYS: (Global) Edit... Create...

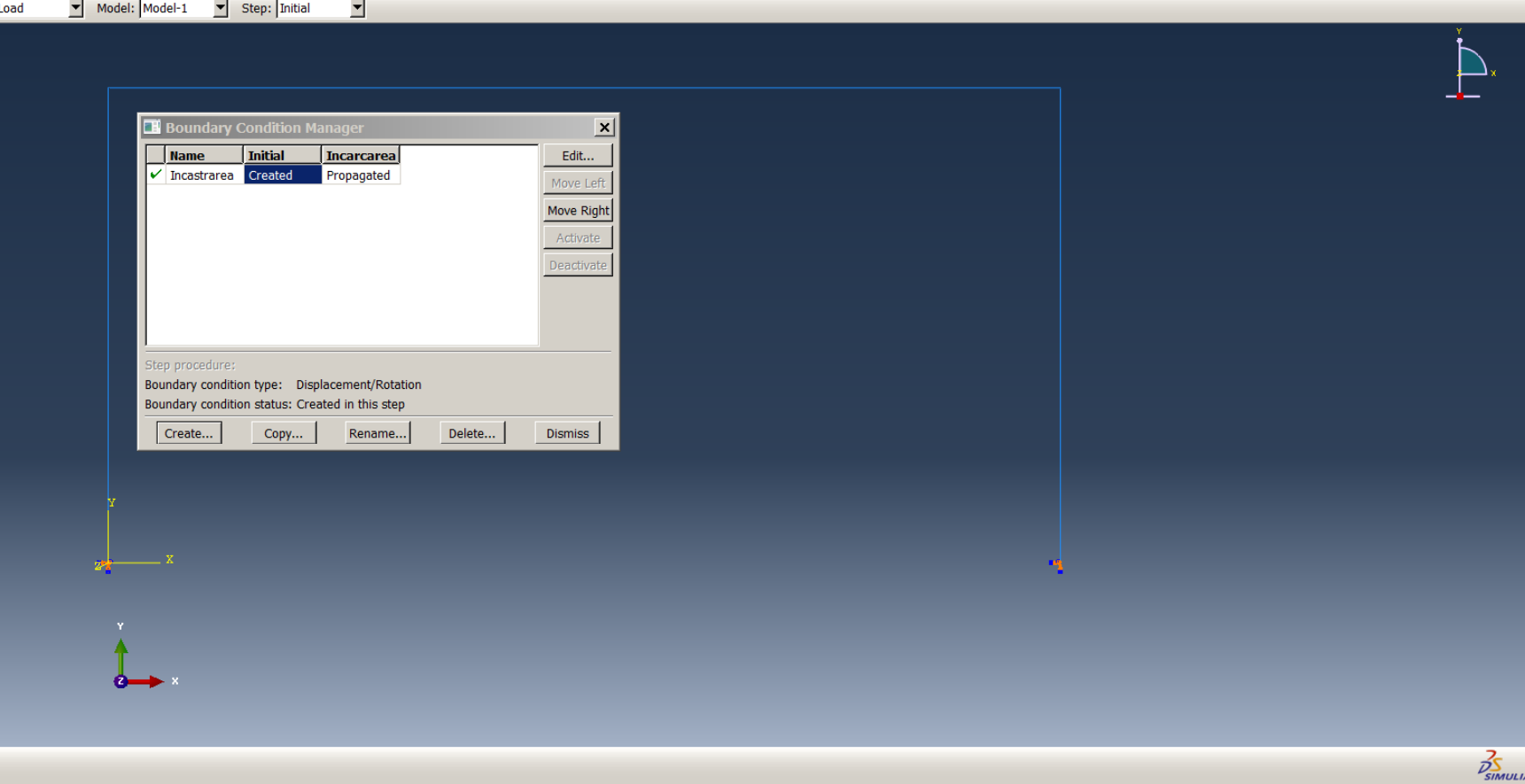
- U1
- U2
- U3
- UR1
- UR2
- UR3

Note: The displacement value will be maintained in subsequent steps.

OK Cancel

Beam orientations have been assigned to the selected regions.

- Model Database
- Models (1)
 - Model-1
 - Parts (1)
 - Materials (1)
 - Sections (1)
 - Profiles (1)
 - Assembly
 - Steps (2)
 - Field Output Requests (1)
 - History Output Requests (1)
 - Time Points
 - ALE Adaptive Mesh Constraints
 - Interactions
 - Interaction Properties
 - Contact Controls
 - Contact Initializations
 - Constraints
 - Connector Sections
 - Fields
 - Amplitudes
 - Loads
 - BCs (1)
 - Predefined Fields
 - Remeshing Rules
 - Sketches
 - Annotations
 - Analysis
 - Jobs
 - Adaptivity Processes
 - Co-executions



Boundary Condition Manager

Name	Initial	Incarcarea
✓ Incastrarea	Created	Propagated

Step procedure:
Boundary condition type: Displacement/Rotation
Boundary condition status: Created in this step

Create... Copy... Rename... Delete... Dismiss

Beam orientations have been assigned to the selected regions.

Model Database

- Models (1)
 - Model-1
 - Parts (1)
 - Materials (1)
 - Sections (1)
 - Profiles (1)
 - Assembly
 - Steps (2)
 - Field Output Requests (1)
 - History Output Requests (1)
 - Time Points
 - ALE Adaptive Mesh Constraints
 - Interactions
 - Interaction Properties
 - Contact Controls
 - Contact Initializations
 - Constraints
 - Connector Sections
 - Fields
 - Amplitudes
 - Loads
 - BCs (1)
 - Predefined Fields
 - Remeshing Rules
 - Sketches
 - Annotations
 - Analysis
 - Jobs
 - Adaptivity Processes
 - Co-executions

Load Manager

Name	Incarcarea
------	------------

Step procedure:
Load type:
Load:

Create... Copy... Rename... Delete... Dismiss

Create Load

Name: Forta
Step: Incarcarea
Procedure: Static, General

Category

- Mechanical
- Thermal
- Acoustic
- Fluid
- Electrical
- Mass diffusion
- Other

Types for Selected Step

- Concentrated force
- Moment
- Pressure
- Shell edge load
- Surface traction
- Pipe pressure
- Body force
- Line load
- Gravity
- Bolt load

Continue... Cancel

Beam orientations have been assigned to the selected regions.

Model Database

- Models (1)
 - Model-1
 - Parts (1)
 - Materials (1)
 - Sections (1)
 - Profiles (1)
 - Assembly
 - Steps (2)
 - Field Output Requests (1)
 - History Output Requests (1)
 - Time Points
 - ALE Adaptive Mesh Constraints
 - Interactions
 - Interaction Properties
 - Contact Controls
 - Contact Initializations
 - Constraints
 - Connector Sections
 - Fields
 - Amplitudes
 - Loads
 - BCs (1)
 - Predefined Fields
 - Remeshing Rules
 - Sketches
 - Annotations
 - Analysis
 - Jobs
 - Adaptivity Processes
 - Co-executions

Viewport navigation tools: Pan, Rotate, Zoom, etc.

Load Manager

Name	Incarcarea
------	------------

Step procedure:
Load type:
Load status:

Create... Copy... Rename... Delete... Dismiss

Edit Load

Name: Forta
Type: Concentrated force
Step: Incarcarea (Static, General)
Region: (Picked)
CSYS: (Global) Edit... Create...
Distribution: Uniform Create...
CF1: 100000 ✓
CF2:
CF3:
Amplitude: (Ramp) Create...
 Follow nodal rotation
Note: Force will be applied per node.
OK Cancel

Beam orientations have been assigned to the selected regions.

Model Database

- Models (1)
 - Model-1
 - Parts (1)
 - Materials (1)
 - Sections (1)
 - Profiles (1)
 - Assembly
 - Steps (2)
 - Field Output Requests (1)
 - History Output Requests (1)
 - Time Points
 - ALE Adaptive Mesh Constraints
 - Interactions
 - Interaction Properties
 - Contact Controls
 - Contact Initializations
 - Constraints
 - Connector Sections
 - Fields
 - Amplitudes
 - Loads (1)
 - BCs (1)
 - Predefined Fields
 - Remeshing Rules
 - Sketches
 - Annotations
 - Analysis
 - Jobs
 - Adaptivity Processes
 - Co-executions

Load Manager

Name	Status
Forta	Created

Step procedure: Static, General
Load type: Concentrated force
Load status: Created in this step

Create... Copy... Rename... Delete... Dismiss

Beam orientations have been assigned to the selected regions.

- Model Database
- Models (1)
 - Model-1
 - Parts (1)
 - Materials (1)
 - Sections (1)
 - Profiles (1)
 - Assembly
 - Steps (2)
 - Field Output Requests (1)
 - History Output Requests (1)
 - Time Points
 - ALE Adaptive Mesh Constraints
 - Interactions
 - Interaction Properties
 - Contact Controls
 - Contact Initializations
 - Constraints
 - Connector Sections
 - Fields
 - Amplitudes
 - Loads (1)
 - BCs (1)
 - Predefined Fields
 - Remeshing Rules
 - Sketches
 - Annotations
 - Analysis
 - Jobs
 - Adaptivity Processes
 - Co-executions

Module: Mesh

Global Seeds

Sizing Controls

Approximate global size:

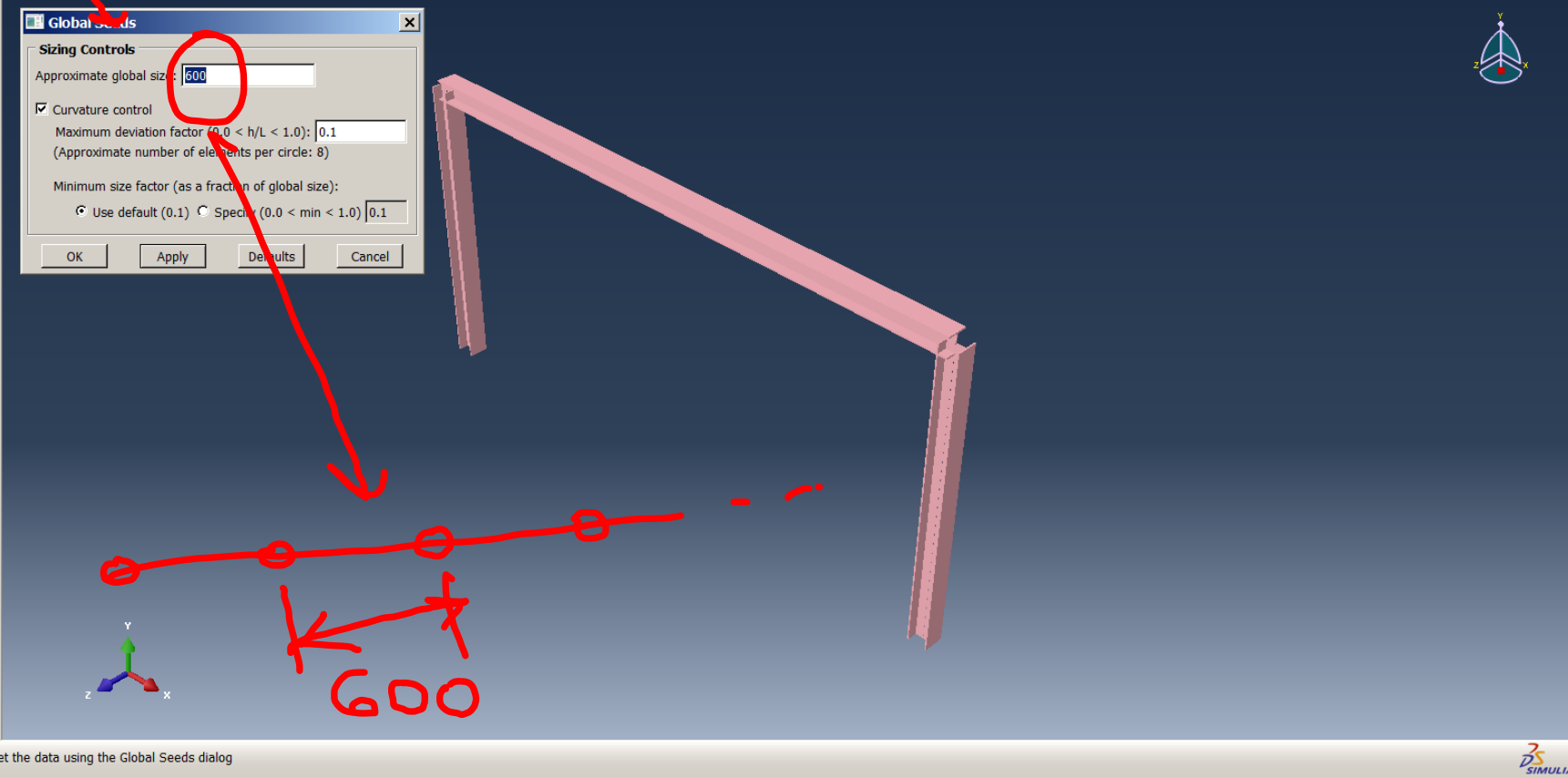
Curvature control

Maximum deviation factor (0.0 < h/L < 1.0):
(Approximate number of elements per circle: 8)

Minimum size factor (as a fraction of global size):

Use default (0.1) Specify (0.0 < min < 1.0)

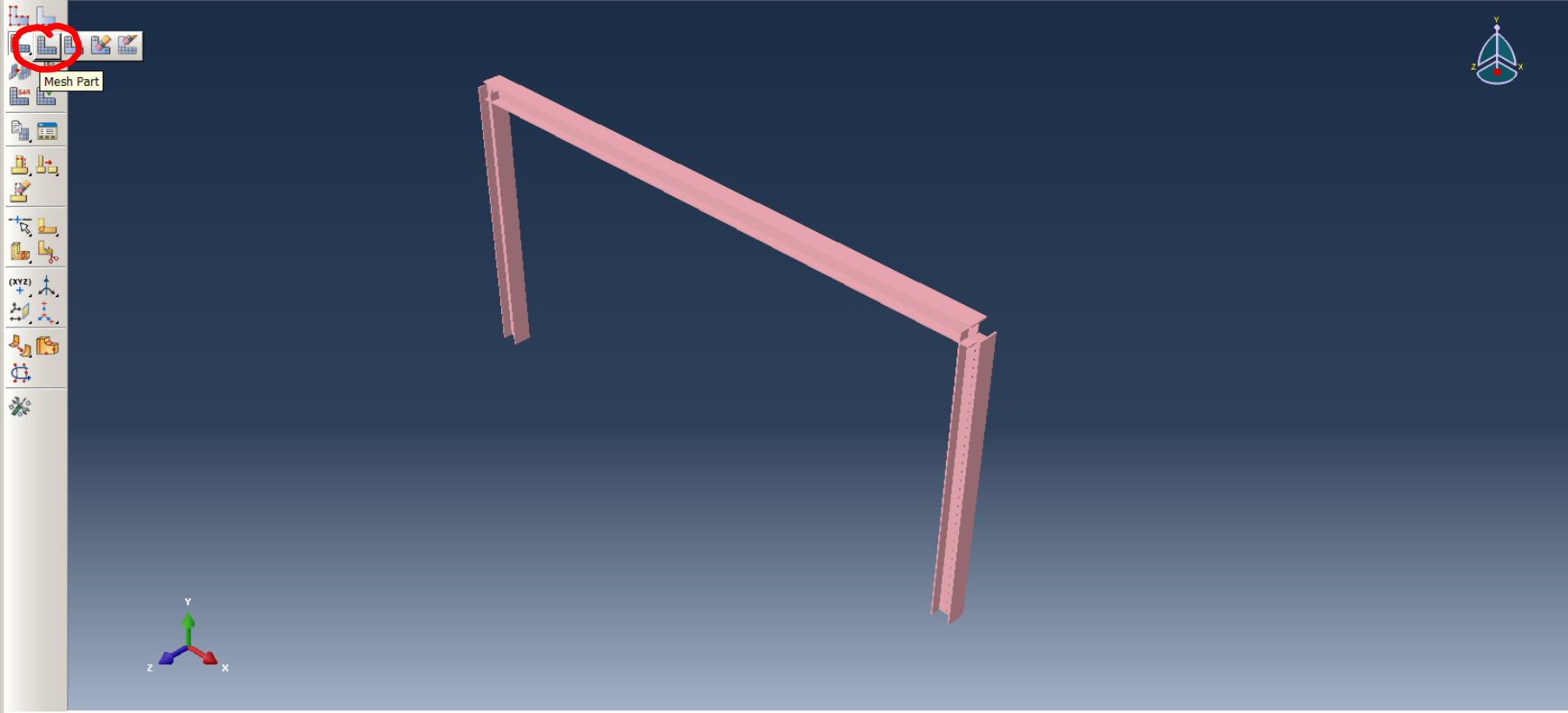
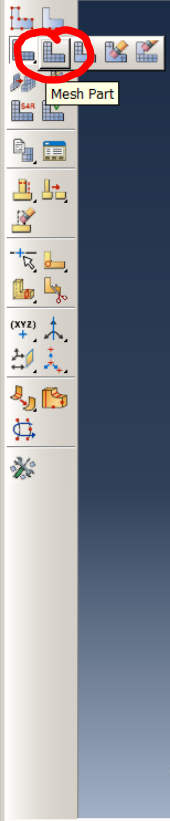
OK Apply Defaults Cancel



Beam orientations have been assigned to the selected regions.

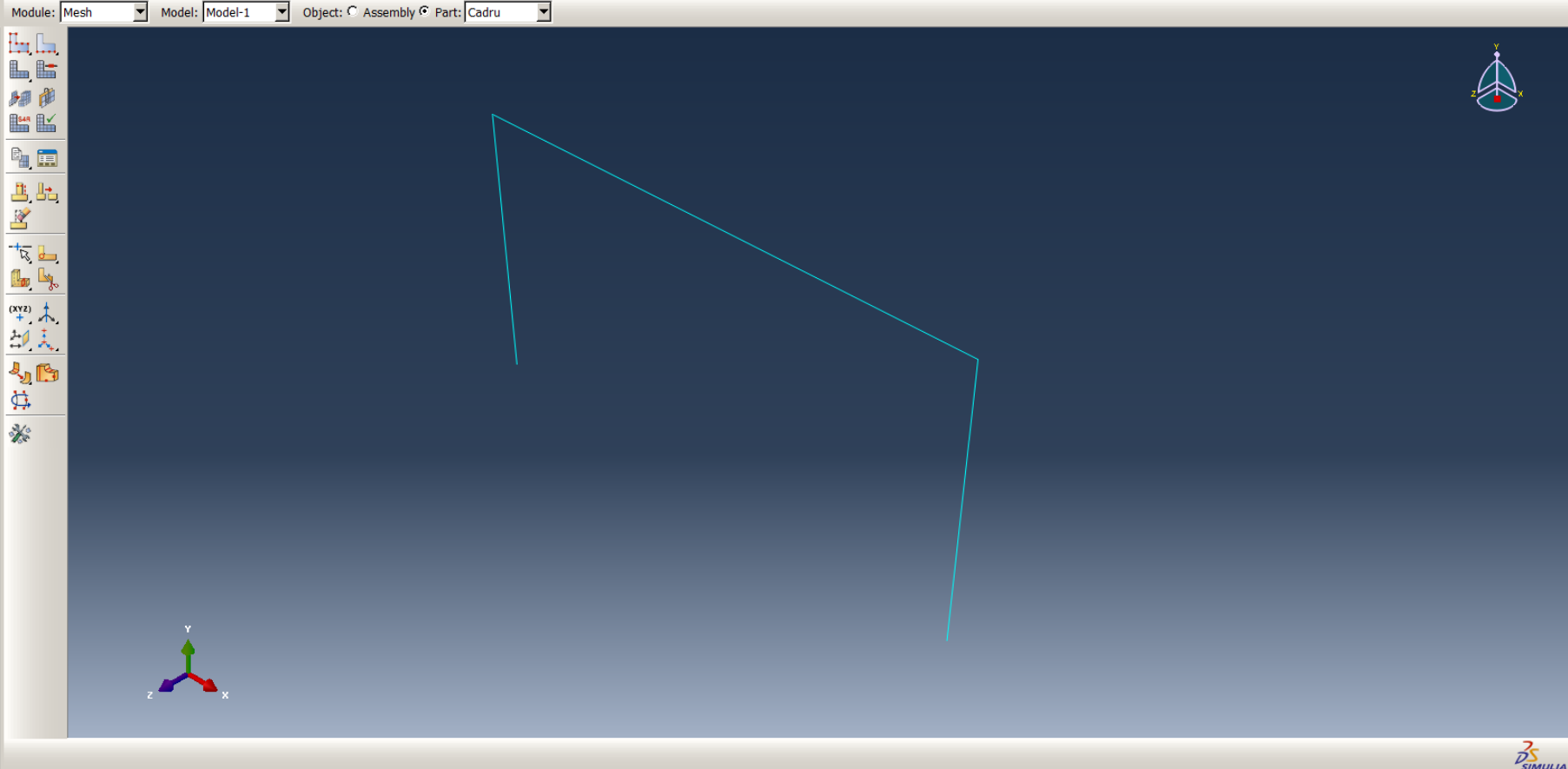
- Model Database
- Models (1)
 - Model-1
 - Parts (1)
 - Materials (1)
 - Sections (1)
 - Profiles (1)
 - Assembly
 - Steps (2)
 - Field Output Requests (1)
 - History Output Requests (1)
 - Time Points
 - ALE Adaptive Mesh Constraints
 - Interactions
 - Interaction Properties
 - Contact Controls
 - Contact Initializations
 - Constraints
 - Connector Sections
 - Fields
 - Amplitudes
 - Loads (1)
 - BCs (1)
 - Predefined Fields
 - Remeshing Rules
 - Sketches
 - Annotations
 - Analysis
 - Jobs
 - Adaptivity Processes
 - Co-executions

Mesh Part



Beam orientations have been assigned to the selected regions.
Global seeds have been assigned.

- Model Database
- Models (1)
 - Model-1
 - Parts (1)
 - Materials (1)
 - Sections (1)
 - Profiles (1)
 - Assembly
 - Steps (2)
 - Field Output Requests (1)
 - History Output Requests (1)
 - Time Points
 - ALE Adaptive Mesh Constraints
 - Interactions
 - Interaction Properties
 - Contact Controls
 - Contact Initializations
 - Constraints
 - Connector Sections
 - Fields
 - Amplitudes
 - Loads (1)
 - BCs (1)
 - Predefined Fields
 - Remeshing Rules
 - Sketches
 - Annotations
 - Analysis
 - Jobs
 - Adaptivity Processes
 - Co-executions



Beam orientations have been assigned to the selected regions.
Global seeds have been assigned.
20 elements have been generated on part: Cadru

- Model Database
- Models (1)
 - Model-1
 - Parts (1)
 - Materials (1)
 - Sections (1)
 - Profiles (1)
 - Assembly
 - Steps (2)
 - Field Output Requests (1)
 - History Output Requests (1)
 - Time Points
 - ALE Adaptive Mesh Constraints
 - Interactions
 - Interaction Properties
 - Contact Controls
 - Contact Initializations
 - Constraints
 - Connector Sections
 - Fields
 - Amplitudes
 - Loads (1)
 - BCs (1)
 - Predefined Fields
 - Remeshing Rules
 - Sketches
 - Annotations
 - Analysis
 - Jobs
 - Adaptivity Processes
 - Co-executions

Job Manager

Name	Model	Type	Status
------	-------	------	--------

Buttons: Create Input, Data Check, Submit, Continue, Monitor..., Results, Kill

Buttons: Create..., Edit..., Copy..., Rename..., Delete..., Dismiss

Create Job

Name: Cadrul

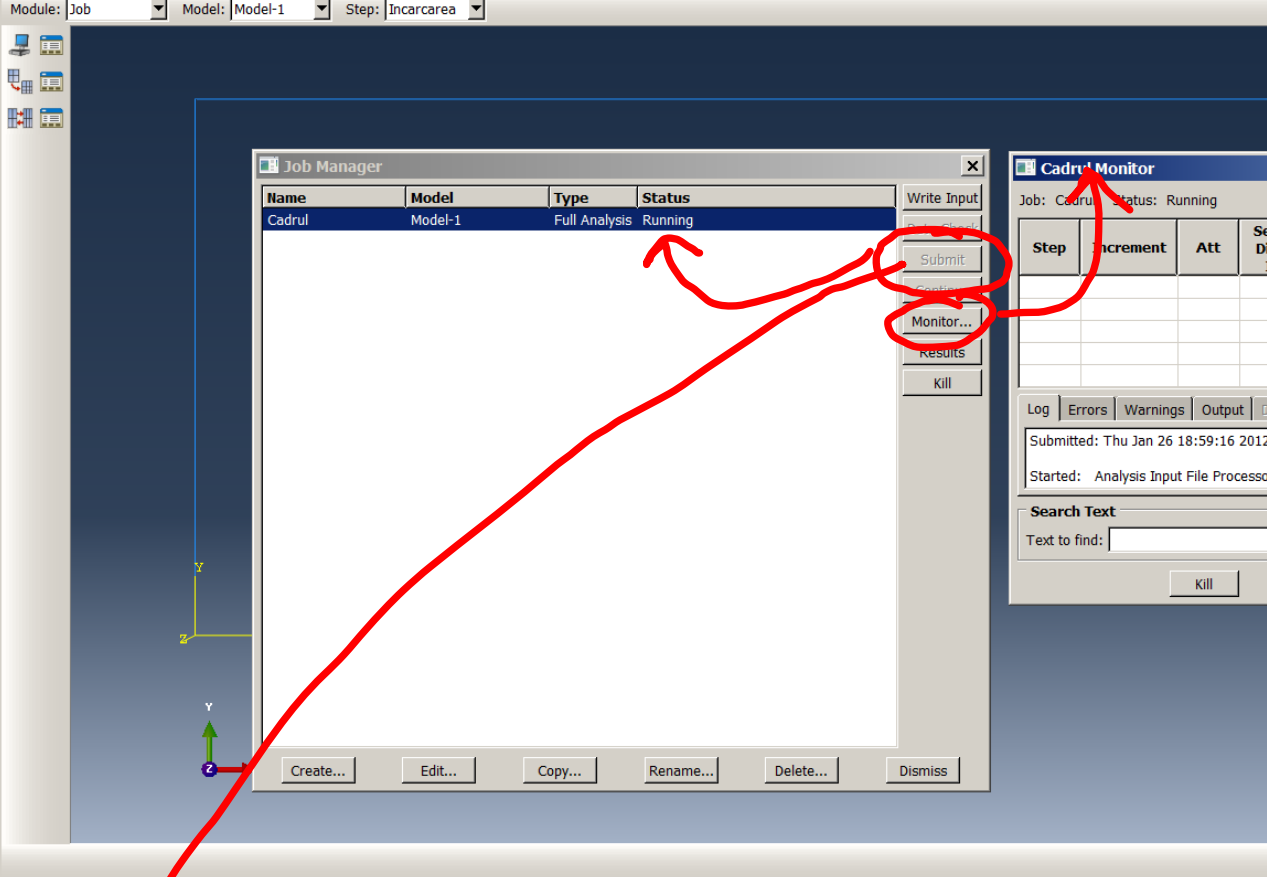
Source: Model

Model-1

Buttons: Continue..., Cancel

Beam orientations have been assigned to the selected regions.
Global seeds have been assigned.
20 elements have been generated on part: Cadru

- Model Database
- Models (1)
 - Model-1
 - Parts (1)
 - Materials (1)
 - Sections (1)
 - Profiles (1)
 - Assembly
 - Steps (2)
 - Field Output Requests (1)
 - History Output Requests (1)
 - Time Points
 - ALE Adaptive Mesh Constraints
 - Interactions
 - Interaction Properties
 - Contact Controls
 - Contact Initializations
 - Constraints
 - Connector Sections
 - Fields
 - Amplitudes
 - Loads (1)
 - BCs (1)
 - Predefined Fields
 - Remeshing Rules
 - Sketches
 - Annotations
 - Analysis
 - Jobs (1)
 - Adaptivity Processes
 - Co-executions



Name	Model	Type	Status
Cadrul	Model-1	Full Analysis	Running

Buttons: Write Input, Submit, Monitor..., Results, Kill, Create..., Edit..., Copy..., Rename..., Delete..., Dismiss

Step	Increment	Att	Severe Discon Iter	Equil Iter	Total Iter	Total Time/Freq	Step Time/LPF	Time/LPF Inc

Log Errors Warnings Output Data File Message File Status File

Submitted: Thu Jan 26 18:59:16 2012
Started: Analysis Input File Processor

Search Text
Text to find: Match case

Beam orientations have been assigned to the selected regions.
Global seeds have been assigned.
20 elements have been generated on part: Cadrul
The job "Cadrul" has been created.
The job input file "Cadrul.inp" has been submitted for analysis.

- Model Database
- Models (1)
 - Model-1
 - Parts (1)
 - Materials (1)
 - Sections (1)
 - Profiles (1)
 - Assembly
 - Steps (2)
 - Field Output Requests (1)
 - History Output Requests (1)
 - Time Points
 - ALE Adaptive Mesh Constraints
 - Interactions
 - Interaction Properties
 - Contact Controls
 - Contact Initializations
 - Constraints
 - Connector Sections
 - Fields
 - Amplitudes
 - Loads (1)
 - BCs (1)
 - Predefined Fields
 - Remeshing Rules
 - Sketches
 - Annotations
 - Analysis
 - Jobs (1)
 - Adaptivity Processes
 - Co-executions

Name	Model	Type	Status
Cadrul	Model-1	Full Analysis	Completed

Buttons: Write Input, Data Check, Submit, Continue, Monitor..., Results, Create..., Edit..., Copy..., Rename..., Delete..., Dismiss

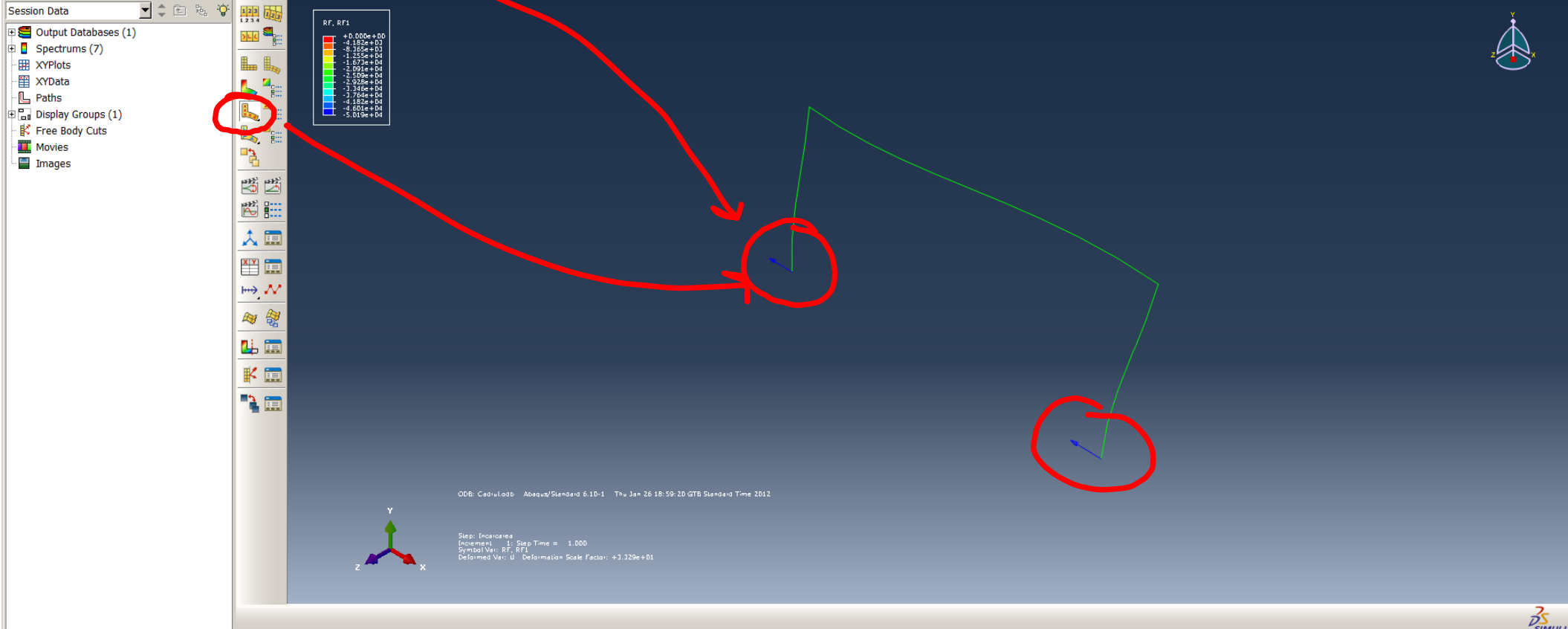
Step	Increment	Att	Severe Discon Iter	Equil Iter	Total Iter	Total Time/Freq	Step Time/LPF	Time/CPF Inc
1	1	1	0	1	1	1	1	1

Log | Errors | Warnings | Output | Data File | Message File | Status File

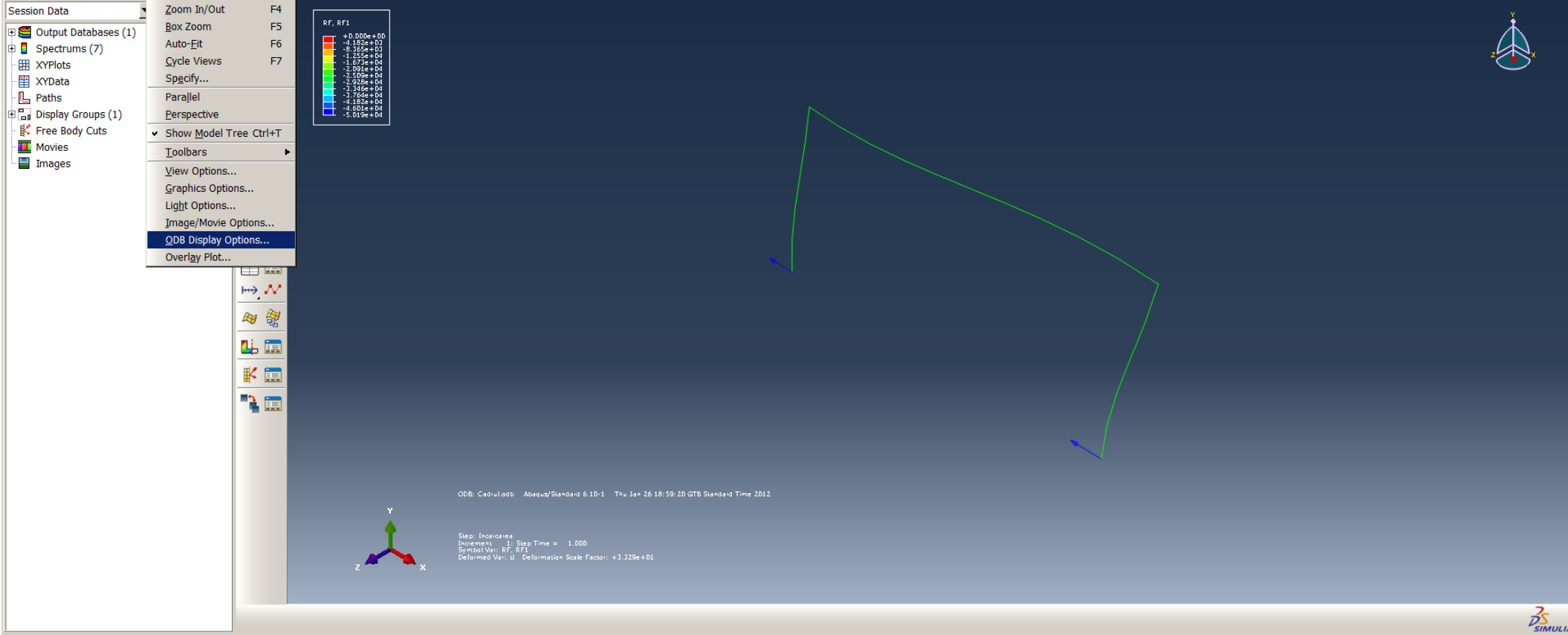
Completed: Abaqus/Standard
Completed: Thu Jan 26 18:59:27 2012

Search Text
Text to find: Match case

Beam orientations have been assigned to the selected regions.
Global seeds have been assigned.
20 elements have been generated on part: Cadru
The job "Cadrul" has been created.
The job input file "Cadrul.inp" has been submitted for analysis.
Job Cadrul: Analysis Input File Processor completed successfully.
Job Cadrul: Abaqus/Standard completed successfully.
Job Cadrul completed successfully.



Beam orientations have been assigned to the selected regions.
Global seeds have been assigned.
20 elements have been generated on part: Cadru
The job "Cadrul" has been created.
The job input file "Cadrul.inp" has been submitted for analysis.
Job Cadrul: Analysis Input File Processor completed successfully.
Job Cadrul: Abaqus/Standard completed successfully.
Job Cadrul completed successfully.



Beam orientations have been assigned to the selected regions.
Global seeds have been assigned.
20 elements have been generated on part: Cadrul
The job "Cadrul" has been created.
The job input file "Cadrul.inp" has been submitted for analysis.
Job Cadrul: Analysis Input File Processor completed successfully.
Job Cadrul: Abaqus/Standard completed successfully.
Job Cadrul completed successfully.